

**SYNJ2 Antibody (Center)**  
**Affinity Purified Rabbit Polyclonal Antibody (Pab)**  
**Catalog # AP19970c**

**Specification**

---

**SYNJ2 Antibody (Center) - Product Information**

Application	WB,E
Primary Accession	<a href="#">O15056</a>
Other Accession	<a href="#">NP_003889.1</a>
Reactivity	Human
Host	Rabbit
Clonality	Polyclonal
Isotype	Rabbit IgG
Calculated MW	165538
Antigen Region	679-707

**SYNJ2 Antibody (Center) - Additional Information**

**Gene ID** 8871

**Other Names**

Synaptojanin-2, Synaptic inositol 1, 5-trisphosphate 5-phosphatase 2, SYNJ2, KIAA0348

**Target/Specificity**

This SYNJ2 antibody is generated from rabbits immunized with a KLH conjugated synthetic peptide between 679-707 amino acids from the Central region of human SYNJ2.

**Dilution**

WB~~1:1000

E~~Use at an assay dependent concentration.

**Format**

Purified polyclonal antibody supplied in PBS with 0.09% (W/V) sodium azide. This antibody is purified through a protein A column, followed by peptide affinity purification.

**Storage**

Maintain refrigerated at 2-8°C for up to 2 weeks. For long term storage store at -20°C in small aliquots to prevent freeze-thaw cycles.

**Precautions**

SYNJ2 Antibody (Center) is for research use only and not for use in diagnostic or therapeutic procedures.

**SYNJ2 Antibody (Center) - Protein Information**

**Name** SYNJ2

**Synonyms** KIAA0348

**Function** Inositol 5-phosphatase which may be involved in distinct membrane trafficking and signal transduction pathways. May mediate the inhibitory effect of Rac1 on endocytosis.

#### Cellular Location

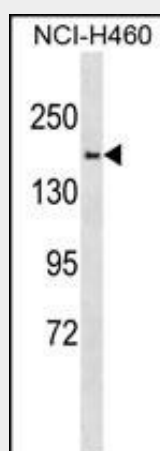
Cytoplasm. Cell membrane. Membrane raft. Presynapse {ECO:0000250|UniProtKB:O55207}. Cytoplasm, cytoskeleton {ECO:0000250|UniProtKB:O55207}. Note=Localizes at presynapse terminals in brain and at bundles of microtubules surrounding the nucleus in the elongating spermatids corresponding to the manchette (By similarity) Translocates from the cytoplasm to membrane ruffles in a RAC1-dependent manner (PubMed:11084340).

### SYNJ2 Antibody (Center) - Protocols

Provided below are standard protocols that you may find useful for product applications.

- [Western Blot](#)
- [Blocking Peptides](#)
- [Dot Blot](#)
- [Immunohistochemistry](#)
- [Immunofluorescence](#)
- [Immunoprecipitation](#)
- [Flow Cytometry](#)
- [Cell Culture](#)

### SYNJ2 Antibody (Center) - Images



SYNJ2 Antibody (Center) (Cat. #AP19970c) western blot analysis in NCI-H460 cell line lysates (35ug/lane). This demonstrates the SYNJ2 antibody detected the SYNJ2 protein (arrow).

### SYNJ2 Antibody (Center) - Background

The gene is a member of the inositol-polyphosphate 5-phosphatase family. The encoded protein interacts with the ras-related C3 botulinum toxin substrate 1, which causes translocation of the encoded protein to the plasma membrane where it inhibits clathrin-mediated endocytosis. Alternative splicing results in multiple transcript variants.

### SYNJ2 Antibody (Center) - References

Rikova, K., et al. Cell 131(6):1190-1203(2007)

Ieguchi, K., et al. J. Biol. Chem. 282(32):23296-23305(2007)  
Rossi, M.R., et al. Cancer Genet. Cytogenet. 161(2):97-103(2005)  
Chuang, Y.Y., et al. Cancer Res. 64(22):8271-8275(2004)  
Spaenij-Dekking, E.H., et al. Leukemia 17(12):2467-2473(2003)

**SYNJ2 Antibody (Center) - Citations**

- [A short deletion in the DNA-binding domain of STAT3 suppresses growth and progression of colon cancer cells](#)