

**PDE8B Antibody (Center)**  
**Affinity Purified Rabbit Polyclonal Antibody (Pab)**  
**Catalog # AP20045c**

**Specification**

---

**PDE8B Antibody (Center) - Product Information**

Application	WB,E
Primary Accession	<a href="#">O95263</a>
Other Accession	<a href="#">E904S1</a> , <a href="#">NP_003710.1</a>
Reactivity	Mouse
Host	Rabbit
Clonality	Polyclonal
Isotype	Rabbit IgG
Calculated MW	98979
Antigen Region	296-324

**PDE8B Antibody (Center) - Additional Information**

**Gene ID** 8622

**Other Names**

High affinity cAMP-specific and IBMX-insensitive 3', 5'-cyclic phosphodiesterase 8B, HspDE8B, Cell proliferation-inducing gene 22 protein, PDE8B

**Target/Specificity**

This PDE8B antibody is generated from rabbits immunized with a KLH conjugated synthetic peptide between 296-324 amino acids from the Central region of human PDE8B.

**Dilution**

WB~~1:1000

**Format**

Purified polyclonal antibody supplied in PBS with 0.09% (W/V) sodium azide. This antibody is purified through a protein A column, followed by peptide affinity purification.

**Storage**

Maintain refrigerated at 2-8°C for up to 2 weeks. For long term storage store at -20°C in small aliquots to prevent freeze-thaw cycles.

**Precautions**

PDE8B Antibody (Center) is for research use only and not for use in diagnostic or therapeutic procedures.

**PDE8B Antibody (Center) - Protein Information**

**Name** PDE8B

**Function** Hydrolyzes the second messenger cAMP, which is a key regulator of many important

physiological processes. May be involved in specific signaling in the thyroid gland.

#### **Tissue Location**

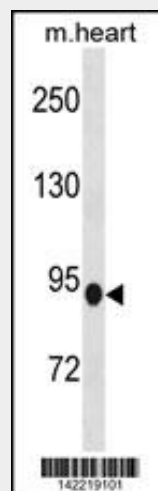
Abundantly expressed in the thyroid. Also very weakly expressed in brain, spinal cord and placenta. In the thyroid isoform 1 predominates, and isoforms 2 and 6 are also highly expressed. In the placenta isoforms 1 and 2 are expressed equally. In the brain isoform 2 predominates.

#### **PDE8B Antibody (Center) - Protocols**

Provided below are standard protocols that you may find useful for product applications.

- [Western Blot](#)
- [Blocking Peptides](#)
- [Dot Blot](#)
- [Immunohistochemistry](#)
- [Immunofluorescence](#)
- [Immunoprecipitation](#)
- [Flow Cytometry](#)
- [Cell Culture](#)

#### **PDE8B Antibody (Center) - Images**



PDE8B Antibody (Center) (Cat. #AP20045c) western blot analysis in mouse heart tissue lysates (35ug/lane). This demonstrates the PDE8B antibody detected the PDE8B protein (arrow).

#### **PDE8B Antibody (Center) - Background**

The protein encoded by this gene is a cyclic nucleotide phosphodiesterase (PDE) that catalyzes the hydrolysis of the second messenger cAMP. The encoded protein, which does not hydrolyze cGMP, is resistant to several PDE inhibitors. Defects in this gene are a cause of autosomal dominant striatal degeneration (ADSD). Several transcript variants encoding different isoforms have been found for this gene.

#### **PDE8B Antibody (Center) - References**

Horvath, A., et al. *Thyroid* 20(4):363-367(2010)

Rose, J. Phd, et al. Mol. Med. (2010) In press :  
Appenzeller, S., et al. Am. J. Hum. Genet. 86(1):83-87(2010)  
Shields, B.M., et al. J. Clin. Endocrinol. Metab. 94(11):4608-4612(2009)  
Bimpaki, E.I., et al. Eur. J. Endocrinol. 161(1):153-161(2009)