

ILF2 Antibody (N-term)
Affinity Purified Rabbit Polyclonal Antibody (Pab)
Catalog # AP20063a**Specification**

ILF2 Antibody (N-term) - Product Information

Application	WB,E
Primary Accession	Q12905
Other Accession	Q7TP98 , Q9CXY6 , Q6NZ06 , NP_004506.2
Reactivity	Human
Predicted	Zebrafish, Mouse, Rat
Host	Rabbit
Clonality	Polyclonal
Isotype	Rabbit IgG
Calculated MW	43062
Antigen Region	84-112

ILF2 Antibody (N-term) - Additional Information**Gene ID** 3608**Other Names**

Interleukin enhancer-binding factor 2, Nuclear factor of activated T-cells 45 kDa, ILF2, NF45

Target/Specificity

This ILF2 antibody is generated from rabbits immunized with a KLH conjugated synthetic peptide between 84-112 amino acids from the N-terminal region of human ILF2.

Dilution

WB~~1:1000

E~~Use at an assay dependent concentration.

Format

Purified polyclonal antibody supplied in PBS with 0.09% (W/V) sodium azide. This antibody is purified through a protein A column, followed by peptide affinity purification.

Storage

Maintain refrigerated at 2-8°C for up to 2 weeks. For long term storage store at -20°C in small aliquots to prevent freeze-thaw cycles.

Precautions

ILF2 Antibody (N-term) is for research use only and not for use in diagnostic or therapeutic procedures.

ILF2 Antibody (N-term) - Protein Information**Name** ILF2

Synonyms NF45

Function Chromatin-interacting protein that forms a stable heterodimer with interleukin enhancer-binding factor 3/ILF3 and plays a role in several biological processes including transcription, innate immunity or cell growth (PubMed:[18458058](#), PubMed:[31212927](#)). Essential for the efficient reshuttling of ILF3 (isoform 1 and isoform 2) into the nucleus. Together with ILF3, forms an RNA-binding complex that is required for mitotic progression and cytokinesis by regulating the expression of a cluster of mitotic genes. Mechanistically, competes with STAU1/STAU2-mediated mRNA decay (PubMed:[32433969](#)). Also plays a role in the inhibition of various viruses including Japanese encephalitis virus or enterovirus 71.

Cellular Location

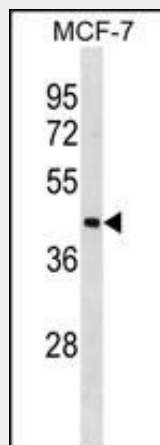
Nucleus, nucleolus. Cytoplasm. Nucleus. Note=Localized in cytoplasmic mRNP granules containing untranslated mRNAs

ILF2 Antibody (N-term) - Protocols

Provided below are standard protocols that you may find useful for product applications.

- [Western Blot](#)
- [Blocking Peptides](#)
- [Dot Blot](#)
- [Immunohistochemistry](#)
- [Immunofluorescence](#)
- [Immunoprecipitation](#)
- [Flow Cytometry](#)
- [Cell Culture](#)

ILF2 Antibody (N-term) - Images



ILF2 Antibody (N-term) (Cat. #AP20063a) western blot analysis in MCF-7 cell line lysates (35ug/lane). This demonstrates the ILF2 antibody detected the ILF2 protein (arrow).

ILF2 Antibody (N-term) - Background

Nuclear factor of activated T-cells (NFAT) is a transcription factor required for T-cell expression of the interleukin 2 gene. NFAT binds to a sequence in the interleukin 2 gene enhancer known as the antigen receptor response element 2. In addition, NFAT can bind RNA and is an essential component for

encapsidation and protein priming of hepatitis B viral polymerase. NFAT is a heterodimer of 45 kDa and 90 kDa proteins, the smaller of which is the product of this gene. The encoded protein binds strongly to the 90 kDa protein and stimulates its ability to enhance gene expression.

ILF2 Antibody (N-term) - References

Karmakar, S., et al. EMBO J. 29(19):3260-3271(2010)
Davila, S., et al. Genes Immun. 11(3):232-238(2010)
Graber, T.E., et al. Cell Death Differ. 17(4):719-729(2010)
Kiesler, P., et al. J. Biol. Chem. 285(11):8256-8267(2010)
Sakamoto, S., et al. Mol. Cell. Biol. 29(13):3754-3769(2009)