

RRM1 Antibody (N-term)
Affinity Purified Rabbit Polyclonal Antibody (Pab)
Catalog # AP20081a**Specification**

RRM1 Antibody (N-term) - Product Information

Application	WB,E
Primary Accession	P23921
Other Accession	P07742 , NP_001024.1
Reactivity	Human
Predicted	Mouse
Host	Rabbit
Clonality	Polyclonal
Isotype	Rabbit IgG
Calculated MW	90070
Antigen Region	71-100

RRM1 Antibody (N-term) - Additional Information**Gene ID** 6240**Other Names**

Ribonucleoside-diphosphate reductase large subunit, Ribonucleoside-diphosphate reductase subunit M1, Ribonucleotide reductase large subunit, RRM1, RR1

Target/Specificity

This RRM1 antibody is generated from rabbits immunized with a KLH conjugated synthetic peptide between 71-100 amino acids from the N-terminal region of human RRM1.

Dilution

WB~~1:1000

E~~Use at an assay dependent concentration.

Format

Purified polyclonal antibody supplied in PBS with 0.09% (W/V) sodium azide. This antibody is purified through a protein A column, followed by peptide affinity purification.

Storage

Maintain refrigerated at 2-8°C for up to 2 weeks. For long term storage store at -20°C in small aliquots to prevent freeze-thaw cycles.

Precautions

RRM1 Antibody (N-term) is for research use only and not for use in diagnostic or therapeutic procedures.

RRM1 Antibody (N-term) - Protein Information**Name** RRM1

Synonyms RRM1

Function Provides the precursors necessary for DNA synthesis. Catalyzes the biosynthesis of deoxyribonucleotides from the corresponding ribonucleotides.

Cellular Location

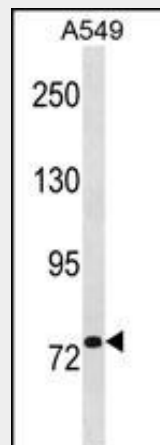
Cytoplasm.

RRM1 Antibody (N-term) - Protocols

Provided below are standard protocols that you may find useful for product applications.

- [Western Blot](#)
- [Blocking Peptides](#)
- [Dot Blot](#)
- [Immunohistochemistry](#)
- [Immunofluorescence](#)
- [Immunoprecipitation](#)
- [Flow Cytometry](#)
- [Cell Culture](#)

RRM1 Antibody (N-term) - Images



RRM1 Antibody (N-term) (Cat. #AP20081a) western blot analysis in A549 cell line lysates (35ug/lane). This demonstrates the RRM1 antibody detected the RRM1 protein (arrow).

RRM1 Antibody (N-term) - Background

This gene encodes one of two non-identical subunits that constitute ribonucleoside-diphosphate reductase, an enzyme essential for the production of deoxyribonucleotides prior to DNA synthesis in S phase of dividing cells. It is one of several genes located in the imprinted gene domain of 11p15.5, an important tumor-suppressor gene region. Alterations in this region have been associated with the Beckwith-Wiedemann syndrome, Wilms tumor, rhabdomyosarcoma, adrenocortical carcinoma, and lung, ovarian, and breast cancer. This gene may play a role in malignancies and disease that involve this region.

RRM1 Antibody (N-term) - References

Ucisik-Akkaya, E., et al. Mol. Hum. Reprod. 16(10):770-777(2010)
Liu, C.Y., et al. Carcinogenesis 31(7):1259-1263(2010)
Vinolas, N., et al. Lung Cancer (2010) In press :
Niida, H., et al. Genes Dev. 24(4):333-338(2010)
Dong, S., et al. J Hematol Oncol 3, 10 (2010) :