

PGBD3 Antibody (N-term)
Affinity Purified Rabbit Polyclonal Antibody (Pab)
Catalog # AP20096A

Specification

PGBD3 Antibody (N-term) - Product Information

Application	WB,E
Primary Accession	Q8N328
Other Accession	NP_736609.2
Reactivity	Human
Host	Rabbit
Clonality	Polyclonal
Isotype	Rabbit IgG
Calculated MW	67595
Antigen Region	21-49

PGBD3 Antibody (N-term) - Additional Information

Gene ID 267004

Other Names

PiggyBac transposable element-derived protein 3, PGBD3

Target/Specificity

This PGBD3 antibody is generated from rabbits immunized with a KLH conjugated synthetic peptide between 21-49 amino acids from the N-terminal region of human PGBD3.

Dilution

WB~~1:1000

Format

Purified polyclonal antibody supplied in PBS with 0.09% (W/V) sodium azide. This antibody is purified through a protein A column, followed by peptide affinity purification.

Storage

Maintain refrigerated at 2-8°C for up to 2 weeks. For long term storage store at -20°C in small aliquots to prevent freeze-thaw cycles.

Precautions

PGBD3 Antibody (N-term) is for research use only and not for use in diagnostic or therapeutic procedures.

PGBD3 Antibody (N-term) - Protein Information

Name PGBD3

Function Binds in vitro to PGBD3-related transposable elements, called MER85s; these non-autonomous 140 bp elements are characterized by the presence of PGBD3 terminal inverted

repeats and the absence of internal transposase ORF.

Cellular Location

Nucleus.

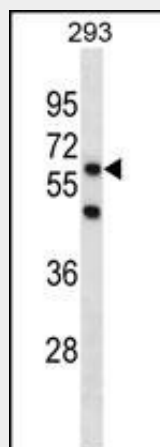
Tissue Location

Expressed in heart and oocytes, but not in granulosa cells (at protein level).

PGBD3 Antibody (N-term) - Protocols

Provided below are standard protocols that you may find useful for product applications.

- [Western Blot](#)
- [Blocking Peptides](#)
- [Dot Blot](#)
- [Immunohistochemistry](#)
- [Immunofluorescence](#)
- [Immunoprecipitation](#)
- [Flow Cytometry](#)
- [Cell Culture](#)

PGBD3 Antibody (N-term) - Images

PGBD3 Antibody (N-term) (Cat. #AP20096a) western blot analysis in 293 cell line lysates (35ug/lane). This demonstrates the PGBD3 antibody detected the PGBD3 protein (arrow).

PGBD3 Antibody (N-term) - Background

The piggyBac family of proteins, found in diverse animals, are transposases related to the transposase of the canonical piggyBac transposon from the moth, *Trichoplusia ni*. This family also includes genes in several genomes, including human, that appear to have been derived from the piggyBac transposons. This gene belongs to the subfamily of piggyBac transposable element derived (PGBD) genes. The PGBD proteins appear to be novel, with no obvious relationship to other transposases, or other known protein families. This gene overlaps with the ERCC6 gene on chromosome 10, and pseudogenes of this locus have been found on chromosomes 4, 5 and 12.

PGBD3 Antibody (N-term) - References

Rose, J.E., et al. Mol. Med. 16 (7-8), 247-253 (2010) :
Newman, J.C., et al. PLoS Genet. 4 (3), E1000031 (2008) :
Grupe, A., et al. Am. J. Hum. Genet. 78(1):78-88(2006)
Sarkar, A., et al. Mol. Genet. Genomics 270(2):173-180(2003)