

SC11A Antibody (Center)
Affinity Purified Rabbit Polyclonal Antibody (Pab)
Catalog # AP20098c**Specification**

SC11A Antibody (Center) - Product Information

Application	WB,E
Primary Accession	P67812
Other Accession	P0C7V7 , P42667 , Q9R0P6 , P67810 , NP_055115.1
Reactivity	Human
Predicted	Bovine, Mouse, Rat
Host	Rabbit
Clonality	Polyclonal
Isotype	Rabbit IgG
Calculated MW	20625
Antigen Region	95-123

SC11A Antibody (Center) - Additional Information**Gene ID** 23478**Other Names**

Signal peptidase complex catalytic subunit SEC11A, Endopeptidase SP18, Microsomal signal peptidase 18 kDa subunit, SPase 18 kDa subunit, SEC11 homolog A, SEC11-like protein 1, SPC18, SEC11A, SEC11L1, SPC18, SPCS4A

Target/Specificity

This SC11A antibody is generated from rabbits immunized with a KLH conjugated synthetic peptide between 95-123 amino acids from the Central region of human SC11A.

Dilution

WB~~1:1000

Format

Purified polyclonal antibody supplied in PBS with 0.09% (W/V) sodium azide. This antibody is purified through a protein A column, followed by peptide affinity purification.

Storage

Maintain refrigerated at 2-8°C for up to 2 weeks. For long term storage store at -20°C in small aliquots to prevent freeze-thaw cycles.

Precautions

SC11A Antibody (Center) is for research use only and not for use in diagnostic or therapeutic procedures.

SC11A Antibody (Center) - Protein Information

Name SEC11A

Synonyms SEC11L1, SPC18, SPCS4A

Function Catalytic component of the signal peptidase complex (SPC) which catalyzes the cleavage of N-terminal signal sequences from nascent proteins as they are translocated into the lumen of the endoplasmic reticulum (PubMed:[34388369](#)). Specifically cleaves N- terminal signal peptides that contain a hydrophobic alpha-helix (h- region) shorter than 18-20 amino acids (PubMed:[34388369](#)).

Cellular Location

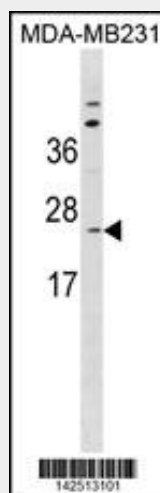
Endoplasmic reticulum membrane {ECO:0000250|UniProtKB:P67811}; Single-pass type II membrane protein {ECO:0000250|UniProtKB:P67811}

SC11A Antibody (Center) - Protocols

Provided below are standard protocols that you may find useful for product applications.

- [Western Blot](#)
- [Blocking Peptides](#)
- [Dot Blot](#)
- [Immunohistochemistry](#)
- [Immunofluorescence](#)
- [Immunoprecipitation](#)
- [Flow Cytometry](#)
- [Cell Culture](#)

SC11A Antibody (Center) - Images



SC11A Antibody (Center) (Cat. #AP20098c) western blot analysis in MDA-MB231 cell line lysates (35ug/lane). This demonstrates the SC11A antibody detected the SC11A protein (arrow).

SC11A Antibody (Center) - Background

Component of the microsomal signal peptidase complex which removes signal peptides from nascent proteins as they are translocated into the lumen of the endoplasmic reticulum (By similarity).

SC11A Antibody (Center) - References

Ewing, R.M., et al. Mol. Syst. Biol. 3, 89 (2007) :
Dodson, G., et al. Curr. Opin. Struct. Biol. 8(2):189-194(1998)