

KRT86 Antibody (Center)
Affinity Purified Rabbit Polyclonal Antibody (Pab)
Catalog # AP20108c**Specification**

KRT86 Antibody (Center) - Product Information

Application	WB,E
Primary Accession	O43790
Other Accession	O9Z2T6 , P78386 , P78385 , A4FUZ0 , Q14533 , Q148H4 , A6NCN2 , NP_002275.1 , P15241 , P25691
Reactivity	Human
Predicted	Sheep, Bovine, Mouse
Host	Rabbit
Clonality	Polyclonal
Isotype	Rabbit IgG
Calculated MW	53501
Antigen Region	300-327

KRT86 Antibody (Center) - Additional Information**Gene ID** 3892**Other Names**

Keratin, type II cuticular Hb6, Hair keratin K211, Keratin-86, K86, Type II hair keratin Hb6, Type-II keratin Kb26, KRT86, KRTHB6

Target/Specificity

This KRT86 antibody is generated from rabbits immunized with a KLH conjugated synthetic peptide between 300-327 amino acids from the Central region of human KRT86.

Dilution

WB~~1:1000

E~~Use at an assay dependent concentration.

Format

Purified polyclonal antibody supplied in PBS with 0.09% (W/V) sodium azide. This antibody is purified through a protein A column, followed by peptide affinity purification.

Storage

Maintain refrigerated at 2-8°C for up to 2 weeks. For long term storage store at -20°C in small aliquots to prevent freeze-thaw cycles.

Precautions

KRT86 Antibody (Center) is for research use only and not for use in diagnostic or therapeutic procedures.

KRT86 Antibody (Center) - Protein Information

Name KRT86

Synonyms KRTHB6

Tissue Location

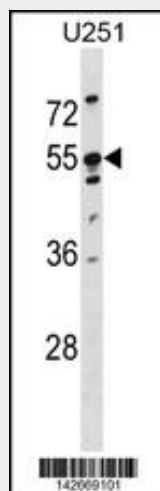
Synthesis begins slightly higher in the hair shaft than HB1 and HB3 and continues much farther up, ending in the keratogeneous zone.

KRT86 Antibody (Center) - Protocols

Provided below are standard protocols that you may find useful for product applications.

- [Western Blot](#)
- [Blocking Peptides](#)
- [Dot Blot](#)
- [Immunohistochemistry](#)
- [Immunofluorescence](#)
- [Immunoprecipitation](#)
- [Flow Cytometry](#)
- [Cell Culture](#)

KRT86 Antibody (Center) - Images



KRT86 Antibody (Center) (Cat. #AP20108c) western blot analysis in U251 cell line lysates (35ug/lane). This demonstrates the KRT86 antibody detected the KRT86 protein (arrow).

KRT86 Antibody (Center) - Background

The protein encoded by this gene is a member of the keratin gene family. As a type II hair keratin, it is a basic protein which heterodimerizes with type I keratins to form hair and nails. The type II hair keratins are clustered in a region of chromosome 12q13 and are grouped into two distinct subfamilies based on structure similarity. One subfamily, consisting of KRTHB1, KRTHB3, and KRTHB6, is highly related. The other less-related subfamily includes KRTHB2, KRTHB4, and KRTHB5. All hair keratins are expressed in the hair follicle; this hair keratin, as well as KRTHB1 and KRTHB3, is found primarily in the hair cortex. Mutations in this gene and KRTHB1 have been observed in patients with a rare

dominant hair disease, monilethrix.

KRT86 Antibody (Center) - References

ZHANG, S.D., et al. Eur J Dermatol 19(5):508-509(2009)
Feng, A.P., et al. Zhonghua Yi Xue Yi Chuan Xue Za Zhi 25(2):141-144(2008)
Lamesch, P., et al. Genomics 89(3):307-315(2007)
Schweizer, J., et al. J. Cell Biol. 174(2):169-174(2006)
Langbein, L., et al. Int. Rev. Cytol. 243, 1-78 (2005) :