

**POPD3 Antibody (C-term)**  
**Affinity Purified Rabbit Polyclonal Antibody (Pab)**  
**Catalog # AP20111b**

**Specification**

---

**POPD3 Antibody (C-term) - Product Information**

Application	WB,E
Primary Accession	<a href="#">Q9HBV1</a>
Other Accession	<a href="#">NP_071756.2</a>
Reactivity	Human
Host	Rabbit
Clonality	Polyclonal
Isotype	Rabbit IgG
Calculated MW	33870
Antigen Region	231-259

**POPD3 Antibody (C-term) - Additional Information**

**Gene ID** 64208

**Other Names**

Popeye domain-containing protein 3, Popeye protein 3, POPDC3, POP3

**Target/Specificity**

This POPD3 antibody is generated from rabbits immunized with a KLH conjugated synthetic peptide between 231-259 amino acids from the C-terminal region of human POPD3.

**Dilution**

WB~~1:1000

E~~Use at an assay dependent concentration.

**Format**

Purified polyclonal antibody supplied in PBS with 0.09% (W/V) sodium azide. This antibody is purified through a protein A column, followed by peptide affinity purification.

**Storage**

Maintain refrigerated at 2-8°C for up to 2 weeks. For long term storage store at -20°C in small aliquots to prevent freeze-thaw cycles.

**Precautions**

POPD3 Antibody (C-term) is for research use only and not for use in diagnostic or therapeutic procedures.

**POPD3 Antibody (C-term) - Protein Information**

**Name** POPDC3

**Synonyms** POP3

**Function** May play a role in the maintenance of heart function mediated, at least in part, through cAMP-binding. May play a role in the regulation of KCNK2/TREK-1-mediated current amplitude (PubMed:[31610034](#)).

**Cellular Location**

Membrane; Multi-pass membrane protein

**Tissue Location**

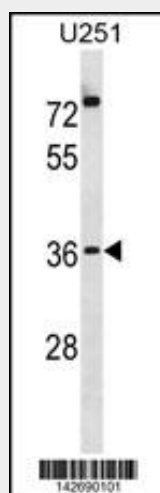
Expressed predominantly in skeletal muscle (at protein level) (PubMed:10882522, PubMed:31610034). Also detected in heart (PubMed:10882522).

**POPD3 Antibody (C-term) - Protocols**

Provided below are standard protocols that you may find useful for product applications.

- [Western Blot](#)
- [Blocking Peptides](#)
- [Dot Blot](#)
- [Immunohistochemistry](#)
- [Immunofluorescence](#)
- [Immunoprecipitation](#)
- [Flow Cytometry](#)
- [Cell Culture](#)

**POPD3 Antibody (C-term) - Images**



POPD3 Antibody (C-term) (Cat. #AP20111b) western blot analysis in U251 cell line lysates (35ug/lane). This demonstrates the POPD3 antibody detected the POPD3 protein (arrow).

**POPD3 Antibody (C-term) - Background**

This gene encodes a member of the POP family of proteins containing three putative transmembrane domains. This gene is expressed in cardiac and skeletal muscle and may play an important role in these tissues during development. Alternatively spliced transcript variants have been found.

**POPD3 Antibody (C-term) - References**

Bailey, S.D., et al. Diabetes Care 33(10):2250-2253(2010)  
Kim, M., et al. Carcinogenesis 31(9):1685-1693(2010)  
Zhao, J., et al. BMC Med. Genet. 11, 96 (2010) :  
Talmud, P.J., et al. Am. J. Hum. Genet. 85(5):628-642(2009)  
Sulem, P., et al. Nat. Genet. 41(6):734-738(2009)