

**EBI3 Antibody (C-term)**  
**Affinity Purified Rabbit Polyclonal Antibody (Pab)**  
**Catalog # AP20128b****Specification**

---

**EBI3 Antibody (C-term) - Product Information**

Application	WB,E
Primary Accession	<a href="#">Q14213</a>
Other Accession	<a href="#">NP_005746.2</a>
Reactivity	Human
Host	Rabbit
Clonality	Polyclonal
Isotype	Rabbit IgG
Calculated MW	25396
Antigen Region	153-181

**EBI3 Antibody (C-term) - Additional Information****Gene ID** 10148**Other Names**

Interleukin-27 subunit beta, IL-27 subunit beta, IL-27B, Epstein-Barr virus-induced gene 3 protein, EBV-induced gene 3 protein, EBI3, IL27B

**Target/Specificity**

This EBI3 antibody is generated from rabbits immunized with a KLH conjugated synthetic peptide between 153-181 amino acids from the C-terminal region of human EBI3.

**Dilution**

WB~~1:1000

E~~Use at an assay dependent concentration.

**Format**

Purified polyclonal antibody supplied in PBS with 0.09% (W/V) sodium azide. This antibody is purified through a protein A column, followed by peptide affinity purification.

**Storage**

Maintain refrigerated at 2-8°C for up to 2 weeks. For long term storage store at -20°C in small aliquots to prevent freeze-thaw cycles.

**Precautions**

EBI3 Antibody (C-term) is for research use only and not for use in diagnostic or therapeutic procedures.

**EBI3 Antibody (C-term) - Protein Information****Name** EBI3

## Synonyms IL27B

**Function** Associates with IL27 to form the IL-27 interleukin, a heterodimeric cytokine which functions in innate immunity. IL-27 has pro- and anti-inflammatory properties, that can regulate T-helper cell development, suppress T-cell proliferation, stimulate cytotoxic T-cell activity, induce isotype switching in B-cells, and that has diverse effects on innate immune cells. Among its target cells are CD4 T-helper cells which can differentiate in type 1 effector cells (TH1), type 2 effector cells (TH2) and IL17 producing helper T-cells (TH17). It drives rapid clonal expansion of naive but not memory CD4 T-cells. It also strongly synergizes with IL-12 to trigger interferon-gamma/IFN-gamma production of naive CD4 T-cells, binds to the cytokine receptor WSX-1/TCCR. Another important role of IL-27 is its antitumor activity as well as its antiangiogenic activity with activation of production of antiangiogenic chemokines.

## Cellular Location

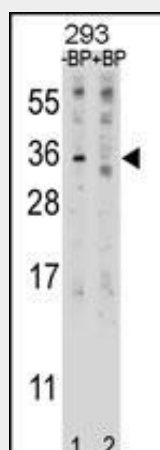
Secreted.

## EBI3 Antibody (C-term) - Protocols

Provided below are standard protocols that you may find useful for product applications.

- [Western Blot](#)
- [Blocking Peptides](#)
- [Dot Blot](#)
- [Immunohistochemistry](#)
- [Immunofluorescence](#)
- [Immunoprecipitation](#)
- [Flow Cytometry](#)
- [Cell Culture](#)

## EBI3 Antibody (C-term) - Images



Western blot analysis of EBI3 Antibody (C-term) Pab (Cat. #AP20128b) pre-incubated without (lane 1) and with (lane 2) blocking peptide in 293 cell line lysate. EBI3 Antibody (C-term) (arrow) was detected using the purified Pab.

## EBI3 Antibody (C-term) - Background

This gene was identified by its induced expression in B lymphocytes in response Epstein-Barr virus infection. It encodes a secreted glycoprotein belonging to the hematopoietin receptor

family, and heterodimerizes with a 28 kDa protein to form interleukin 27 (IL-27). IL-27 regulates T cell and inflammatory responses, in part by activating the Jak/STAT pathway of CD4+ T cells.

#### **EBI3 Antibody (C-term) - References**

Kempe, S., et al. Am. J. Pathol. 175(1):440-447(2009)  
Krumbiegel, D., et al. Pediatr Allergy Immunol 19(6):513-516(2008)  
Poleganov, M.A., et al. Mol. Immunol. 45(10):2869-2880(2008)  
Carl, J.W., et al. Int J Clin Exp Pathol 1(2):117-123(2008)  
Colland, F., et al. Genome Res. 14(7):1324-1332(2004)