

MMEL1 Antibody (N-term)
Affinity Purified Rabbit Polyclonal Antibody (Pab)
Catalog # AP20146a**Specification**

MMEL1 Antibody (N-term) - Product Information

Application	WB,E
Primary Accession	Q495T6
Other Accession	NP_258428.2
Reactivity	Human
Host	Rabbit
Clonality	Polyclonal
Isotype	Rabbit IgG
Calculated MW	89367
Antigen Region	50-78

MMEL1 Antibody (N-term) - Additional Information**Gene ID** 79258**Other Names**

Membrane metallo-endopeptidase-like 1, Membrane metallo-endopeptidase-like 2, NEP2(m), Neprilysin II, NEPII, Neprilysin-2, NEP2, NL2, Membrane metallo-endopeptidase-like 1, soluble form, Neprilysin-2 secreted, NEP2(s), MMEL1, MELL1, MMEL2, NEP2

Target/Specificity

This MMEL1 antibody is generated from rabbits immunized with a KLH conjugated synthetic peptide between 50-78 amino acids from the N-terminal region of human MMEL1.

Dilution

WB~~1:1000

E~~Use at an assay dependent concentration.

Format

Purified polyclonal antibody supplied in PBS with 0.09% (W/V) sodium azide. This antibody is purified through a protein A column, followed by peptide affinity purification.

Storage

Maintain refrigerated at 2-8°C for up to 2 weeks. For long term storage store at -20°C in small aliquots to prevent freeze-thaw cycles.

Precautions

MMEL1 Antibody (N-term) is for research use only and not for use in diagnostic or therapeutic procedures.

MMEL1 Antibody (N-term) - Protein Information**Name** MMEL1

Synonyms MELL1, MMEL2, NEP2

Function Metalloprotease involved in sperm function, possibly by modulating the processes of fertilization and early embryonic development. Degrades a broad variety of small peptides with a preference for peptides shorter than 3 kDa containing neutral bulky aliphatic or aromatic amino acid residues. Shares the same substrate specificity with MME and cleaves peptides at the same amide bond (By similarity).

Cellular Location

Membrane; Single-pass type II membrane protein. Secreted. Note=A secreted form produced by proteolytic cleavage also exists.

Tissue Location

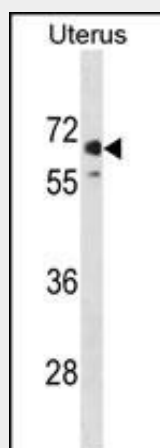
Predominantly expressed in testis. Weakly expressed in brain, kidney and heart.

MMEL1 Antibody (N-term) - Protocols

Provided below are standard protocols that you may find useful for product applications.

- [Western Blot](#)
- [Blocking Peptides](#)
- [Dot Blot](#)
- [Immunohistochemistry](#)
- [Immunofluorescence](#)
- [Immunoprecipitation](#)
- [Flow Cytometry](#)
- [Cell Culture](#)

MMEL1 Antibody (N-term) - Images



MMEL1 Antibody (N-term) (Cat. #AP20146a) western blot analysis in human Uterus tissue lysates (35ug/lane). This demonstrates the MMEL1 antibody detected the MMEL1 protein (arrow).

MMEL1 Antibody (N-term) - Background

The protein encoded by this gene is a member of the neutral endopeptidase (NEP) or membrane metallo-endopeptidase (MME) family. Family members play important roles in pain perception, arterial pressure regulation, phosphate metabolism and homeostasis. This protein is a type II transmembrane protein and is thought to

be expressed as a secreted protein. This gene is expressed mainly in testis with weak expression in the brain, kidney, and heart.

MMEL1 Antibody (N-term) - References

van der Helm-van Mil, A.H., et al. Ann. Rheum. Dis. 69(9):1694-1696(2010)
Hirschfield, G.M., et al. Nat. Genet. 42(8):655-657(2010)
Stahl, E.A., et al. Nat. Genet. 42(6):508-514(2010)
Dubois, P.C., et al. Nat. Genet. 42(4):295-302(2010)
Jugessur, A., et al. PLoS ONE 5 (7), E11493 (2010) :