

**TMIGD2 Antibody (Center)**  
**Affinity Purified Rabbit Polyclonal Antibody (Pab)**  
**Catalog # AP20167c****Specification**

---

**TMIGD2 Antibody (Center) - Product Information**

Application	WB, IHC-P,E
Primary Accession	<a href="#">Q96BF3</a>
Other Accession	<a href="#">NP_653216.2</a>
Reactivity	Human
Host	Rabbit
Clonality	Polyclonal
Isotype	Rabbit IgG
Antigen Region	119-147

**TMIGD2 Antibody (Center) - Additional Information****Gene ID** 126259**Other Names**

Transmembrane and immunoglobulin domain-containing protein 2, CD28 homolog,  
Immunoglobulin and proline-rich receptor 1, IGPR-1, TMIGD2, CD28H, IGPR1

**Target/Specificity**

This TMIGD2 antibody is generated from rabbits immunized with a KLH conjugated synthetic peptide between 119-147 amino acids from the Central region of human TMIGD2.

**Dilution**

WB~~1:1000

IHC-P~~1:100

**Format**

Purified polyclonal antibody supplied in PBS with 0.09% (W/V) sodium azide. This antibody is purified through a protein A column, followed by peptide affinity purification.

**Storage**

Maintain refrigerated at 2-8°C for up to 2 weeks. For long term storage store at -20°C in small aliquots to prevent freeze-thaw cycles.

**Precautions**

TMIGD2 Antibody (Center) is for research use only and not for use in diagnostic or therapeutic procedures.

**TMIGD2 Antibody (Center) - Protein Information****Name** TMIGD2**Synonyms** CD28H, IGPR1

**Function** Plays a role in cell-cell interaction, cell migration, and angiogenesis. Through interaction with HHLA2, costimulates T-cells in the context of TCR-mediated activation. Enhances T-cell proliferation and cytokine production via an AKT-dependent signaling cascade.

#### **Cellular Location**

Cell membrane; Single-pass type I membrane protein

#### **Tissue Location**

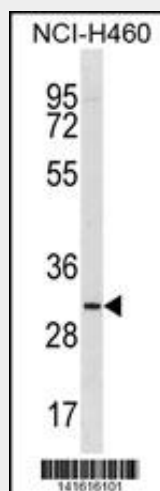
Widely expressed, mainly by epithelial and endothelial cells, including bronchial epithelial cells of lung, breast glandular and lobular epithelia cells, urothelium of the bladder, skin epidermis, epithelium of gastrointestinal, rectum, endometrial glands of the uterus, ureter, fallopian tube epithelium, colonic epithelium, small bowel epithelium, stomach epithelium, including both chief and parietal cells, trophoblastic epithelium of placenta, and pancreatic acinar cells (at protein level). Consistently expressed in veins and arteries (at protein level). Not detected in thyroid, cerebellum, cerebral cortex and thymus (at protein level). Expressed in lymphoid organs, with highest levels in thymus, spleen, peripheral blood lymphocytes and liver. In the thymus, expressed in CD4+ and CD8+ single- and double-positive cells, but not in immature CD4- and CD8- double-negative cells (at protein level). In peripheral blood mononuclear cells, highly expressed on CD56+ or CD16+ natural killer cells and CD3+ T-cells(at protein level). Not detected on B-cells(at protein level). Expressed in tonsils (at protein level)

#### **TMIGD2 Antibody (Center) - Protocols**

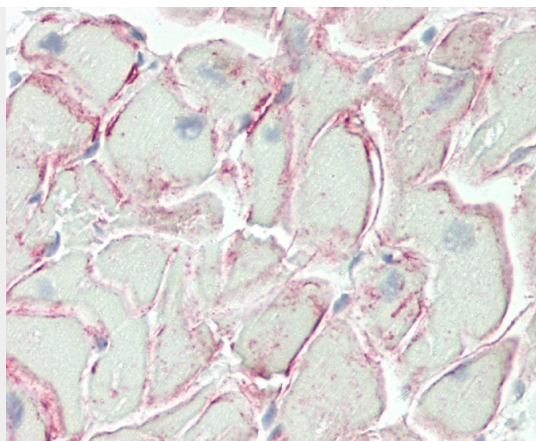
Provided below are standard protocols that you may find useful for product applications.

- [Western Blot](#)
- [Blocking Peptides](#)
- [Dot Blot](#)
- [Immunohistochemistry](#)
- [Immunofluorescence](#)
- [Immunoprecipitation](#)
- [Flow Cytometry](#)
- [Cell Culture](#)

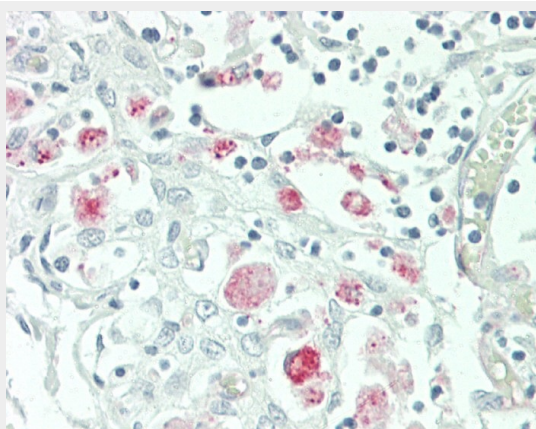
#### **TMIGD2 Antibody (Center) - Images**



TMIGD2 Antibody (Center) (Cat. #AP20167c) western blot analysis in NCI-H460 cell line lysates (35ug/lane). This demonstrates the TMIGD2 antibody detected the TMIGD2 protein (arrow).



Formalin-fixed and paraffin-embedded H.heart tissue reacted with TMIGD2 Antibody (Center) (Cat#AP20167c).



Formalin-fixed and paraffin-embedded H.thymus tissue reacted with TMIGD2 Antibody (Center) (Cat#AP20167c).

#### **TMIGD2 Antibody (Center) - Background**

The function of this protein is unknown.

#### **TMIGD2 Antibody (Center) - References**

Gerhard, D.S., et al. Genome Res. 14 (10B), 2121-2127 (2004) :