

T Antibody (N-term)
Affinity Purified Rabbit Polyclonal Antibody (Pab)
Catalog # AP20187A

Specification

T Antibody (N-term) - Product Information

| | |
|-------------------|---|
| Application | WB, IF, E |
| Primary Accession | O15178 |
| Other Accession | P20293 , P79777 , NP_003172.1 |
| Reactivity | Human |
| Predicted | Chicken, Mouse |
| Host | Rabbit |
| Clonality | Polyclonal |
| Isotype | Rabbit IgG |
| Antigen Region | 15-43 |

T Antibody (N-term) - Additional Information

Gene ID 6862

Other Names

Brachyury protein, Protein T, T

Target/Specificity

This T antibody is generated from rabbits immunized with a KLH conjugated synthetic peptide between 15-43 amino acids from the N-terminal region of human T.

Dilution

WB~~1:2000

IF~~1:25

E~~Use at an assay dependent concentration.

Format

Purified polyclonal antibody supplied in PBS with 0.09% (W/V) sodium azide. This antibody is purified through a protein A column, followed by peptide affinity purification.

Storage

Maintain refrigerated at 2-8°C for up to 2 weeks. For long term storage store at -20°C in small aliquots to prevent freeze-thaw cycles.

Precautions

T Antibody (N-term) is for research use only and not for use in diagnostic or therapeutic procedures.

T Antibody (N-term) - Protein Information

Name TBXT ([HGNC:11515](#))

Synonyms T

Function Involved in the transcriptional regulation of genes required for mesoderm formation and differentiation. Binds to a palindromic T site 5'-TTCACACCTAGGTGTGAA-3' DNA sequence and activates gene transcription when bound to such a site.

Cellular Location

Nucleus

Tissue Location

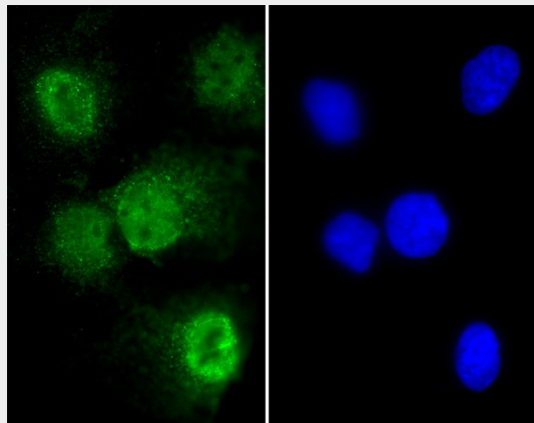
Detected in testis, but not in other, normal tissues. Detected in lung tumors (at protein level)

T Antibody (N-term) - Protocols

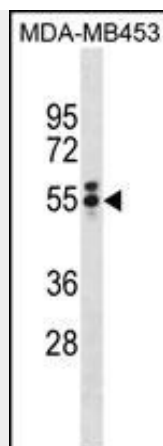
Provided below are standard protocols that you may find useful for product applications.

- [Western Blot](#)
- [Blocking Peptides](#)
- [Dot Blot](#)
- [Immunohistochemistry](#)
- [Immunofluorescence](#)
- [Immunoprecipitation](#)
- [Flow Cytometry](#)
- [Cell Culture](#)

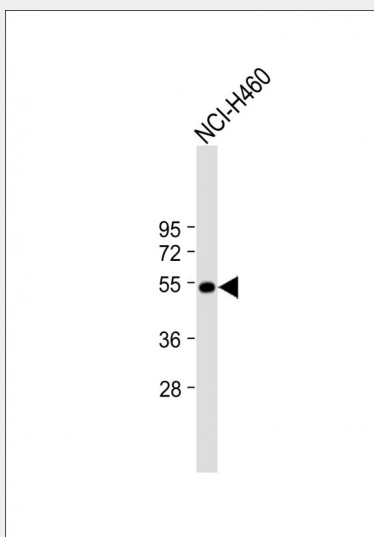
T Antibody (N-term) - Images



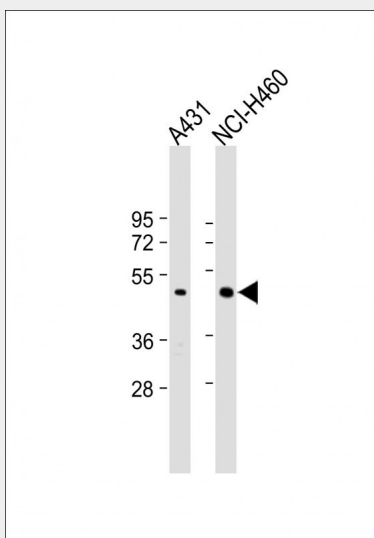
Immunofluorescent analysis of 4% paraformaldehyde-fixed, 0.1% Triton X-100 permeabilized A549 cells labeling TBXT with AP20187a at 1/25 dilution, followed by Dylight® 488-conjugated goat anti-Rabbit IgG (OH191631) secondary antibody at 1/200 dilution (green). Immunofluorescence image showing nucleus, cytoplasm weakly staining on A549 cell line. Cytoplasmic actin is detected with Dylight® 554 Phalloidin (1186255) at 1/500 dilution (red). The nuclear counter stain is DAPI (blue).



T Antibody (N-term) (Cat. #AP20187a) western blot analysis in MDA-MB453 cell line lysates (35ug/lane). This demonstrates the T antibody detected the T protein (arrow).



Anti-T Antibody (N-term) at 1:2000 dilution + NCI-H460 whole cell lysate Lysates/proteins at 20 µg per lane. Secondary Goat Anti-Rabbit IgG, (H+L), Peroxidase conjugated at 1/10000 dilution. Predicted band size : 47 kDa Blocking/Dilution buffer: 5% NFDM/TBST.



All lanes : Anti-T Antibody (N-term) at 1:2000 dilution Lane 1: A431 whole cell lysate Lane 2:

NCI-H460 whole cell lysate Lysates/proteins at 20 µg per lane. Secondary Goat Anti-Rabbit IgG, (H+L), Peroxidase conjugated at 1/10000 dilution. Predicted band size : 47 kDa Blocking/Dilution buffer: 5% NFDM/TBST.

T Antibody (N-term) - Background

The protein encoded by this gene is an embryonic nuclear transcription factor that binds to a specific DNA element, the palindromic T-site. It binds through a region in its N-terminus, called the T-box, and effects transcription of genes required for mesoderm formation and differentiation. The protein is localized to notochord-derived cells.

T Antibody (N-term) - References

Jambhekar, N.A., et al. Arch. Pathol. Lab. Med. 134(8):1181-1187(2010)
Docherty, S.J., et al. BMC Genet. 11, 61 (2010) :
Yang, X.R., et al. Nat. Genet. 41(11):1176-1178(2009)
Oakley, G.J., et al. Mod. Pathol. 21(12):1461-1469(2008)
Bondue, A., et al. Cell Stem Cell 3(1):69-84(2008)