

**MAP2 Antibody (N-term)**  
**Purified Rabbit Polyclonal Antibody (Pab)**  
**Catalog # AP2018a****Specification**

---

**MAP2 Antibody (N-term) - Product Information**

Application	IHC-P,E
Primary Accession	<a href="#">P11137</a>
Other Accession	<a href="#">NP_114033</a>
Reactivity	Human
Host	Rabbit
Clonality	Polyclonal
Isotype	Rabbit IgG
Antigen Region	14-44

**MAP2 Antibody (N-term) - Additional Information****Gene ID** 4133**Other Names**

Microtubule-associated protein 2, MAP-2, MAP2

**Target/Specificity**

This MAP2 antibody is generated from rabbits immunized with a KLH conjugated synthetic peptide between 14~44 amino acids from the N-terminal region of human MAP2.

**Dilution**

IHC-P~~1:50~100

E~~Use at an assay dependent concentration.

**Format**

Purified polyclonal antibody supplied in PBS with 0.09% (W/V) sodium azide. This antibody is prepared by Saturated Ammonium Sulfate (SAS) precipitation followed by dialysis against PBS.

**Storage**

Maintain refrigerated at 2-8°C for up to 2 weeks. For long term storage store at -20°C in small aliquots to prevent freeze-thaw cycles.

**Precautions**

MAP2 Antibody (N-term) is for research use only and not for use in diagnostic or therapeutic procedures.

**MAP2 Antibody (N-term) - Protein Information****Name** MAP2

**Function** The exact function of MAP2 is unknown but MAPs may stabilize the microtubules against depolymerization. They also seem to have a stiffening effect on microtubules.

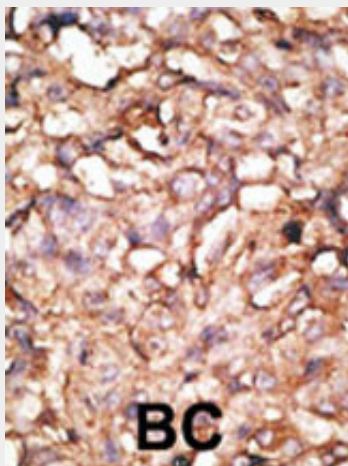
**Cellular Location**

Cytoplasm, cytoskeleton. Cell projection, dendrite {ECO:0000250|UniProtKB:P20357}

**MAP2 Antibody (N-term) - Protocols**

Provided below are standard protocols that you may find useful for product applications.

- [Western Blot](#)
- [Blocking Peptides](#)
- [Dot Blot](#)
- [Immunohistochemistry](#)
- [Immunofluorescence](#)
- [Immunoprecipitation](#)
- [Flow Cytometry](#)
- [Cell Culture](#)

**MAP2 Antibody (N-term) - Images**

Formalin-fixed and paraffin-embedded human cancer tissue reacted with the primary antibody, which was peroxidase-conjugated to the secondary antibody, followed by DAB staining. This data demonstrates the use of this antibody for immunohistochemistry; clinical relevance has not been evaluated. BC = breast carcinoma; HC = hepatocarcinoma.

**MAP2 Antibody (N-term) - Background**

This gene encodes a protein that belongs to the microtubule-associated protein family. The proteins of this family are thought to be involved in microtubule assembly, which is an essential step in neurogenesis. The exact function of this gene is still unknown. The products of similar genes in rat and mouse are neuron-specific cytoskeletal proteins that are enriched in dendrites, implicating a role in determining and stabilizing dendritic shape during neuron development.

**MAP2 Antibody (N-term) - References**

Lauckner, J., et al., Neurobiol. Aging 24(6):767-776 (2003).  
Laurine, E., et al., J. Biol. Chem. 278(32):29979-29986 (2003).  
Liu, Y., et al., Adv Anat Pathol 10(2):101-106 (2003).  
DeTure, M.A., et al., J. Biol. Chem. 277(38):34755-34759 (2002).  
Al-Bassam, J., et al., J. Cell Biol. 157(7):1187-1196 (2002).