

MAP2 Antibody (C-term)
Purified Rabbit Polyclonal Antibody (Pab)
Catalog # AP2018b**Specification**

MAP2 Antibody (C-term) - Product Information

Application	WB, IHC-P,E
Primary Accession	P11137
Reactivity	Human
Host	Rabbit
Clonality	Polyclonal
Isotype	Rabbit IgG
Antigen Region	1766-1796

MAP2 Antibody (C-term) - Additional Information**Gene ID** 4133**Other Names**

Microtubule-associated protein 2, MAP-2, MAP2

Target/Specificity

This MAP2 antibody is generated from rabbits immunized with a KLH conjugated synthetic peptide between 1766-1796 amino acids from the C-terminal region of human MAP2.

Dilution

WB~~1:1000

IHC-P~~1:50~100

E~~Use at an assay dependent concentration.

Format

Purified polyclonal antibody supplied in PBS with 0.09% (W/V) sodium azide. This antibody is purified through a protein A column, followed by peptide affinity purification.

Storage

Maintain refrigerated at 2-8°C for up to 2 weeks. For long term storage store at -20°C in small aliquots to prevent freeze-thaw cycles.

Precautions

MAP2 Antibody (C-term) is for research use only and not for use in diagnostic or therapeutic procedures.

MAP2 Antibody (C-term) - Protein Information**Name** MAP2

Function The exact function of MAP2 is unknown but MAPs may stabilize the microtubules against depolymerization. They also seem to have a stiffening effect on microtubules.

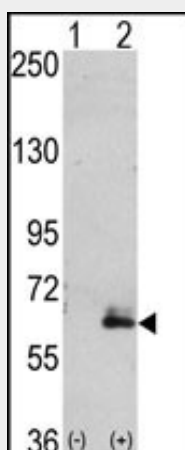
Cellular Location

Cytoplasm, cytoskeleton. Cell projection, dendrite {ECO:0000250|UniProtKB:P20357}

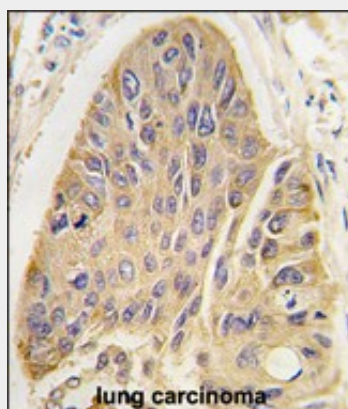
MAP2 Antibody (C-term) - Protocols

Provided below are standard protocols that you may find useful for product applications.

- [Western Blot](#)
- [Blocking Peptides](#)
- [Dot Blot](#)
- [Immunohistochemistry](#)
- [Immunofluorescence](#)
- [Immunoprecipitation](#)
- [Flow Cytometry](#)
- [Cell Culture](#)

MAP2 Antibody (C-term) - Images

Western blot analysis of hMAP2-Q425 (arrow) using rabbit polyclonal hMAP2-Q425 Antibody (RB02868). 293 cell lysates (2 ug/lane) either nontransfected (Lane 1) or transiently transfected with the hMAP2-Q425 gene (Lane 2) (Origene Technologies).



Formalin-fixed and paraffin-embedded human lung carcinoma tissue reacted with hMAP2-Q425 antibody, which was peroxidase-conjugated to the secondary antibody, followed by DAB staining. This data demonstrates the use of this antibody for immunohistochemistry.

MAP2 Antibody (C-term) - Background

This gene encodes a protein that belongs to the microtubule-associated protein family. The proteins of this family are thought to be involved in microtubule assembly, which is an essential step in neurogenesis. The exact function of this gene is still unknown. The products of similar genes in rat and mouse are neuron-specific cytoskeletal proteins that are enriched in dendrites, implicating a role in determining and stabilizing dendritic shape during neuron development.

MAP2 Antibody (C-term) - References

- Lauckner, J., et al., Neurobiol. Aging 24(6):767-776 (2003).
Laurine, E., et al., J. Biol. Chem. 278(32):29979-29986 (2003).
Liu, Y., et al., Adv Anat Pathol 10(2):101-106 (2003).
DeTure, M.A., et al., J. Biol. Chem. 277(38):34755-34759 (2002).
Al-Bassam, J., et al., J. Cell Biol. 157(7):1187-1196 (2002).