

MAP2 Antibody
Affinity Purified Rabbit Polyclonal Antibody (Pab)
Catalog # AP2018e**Specification**

MAP2 Antibody - Product Information

Application	WB, IHC-P, FC,E
Primary Accession	P11137
Reactivity	Human
Host	Rabbit
Clonality	Polyclonal
Isotype	Rabbit IgG

MAP2 Antibody - Additional Information**Gene ID** 4133**Other Names**

Microtubule-associated protein 2, MAP-2, MAP2

Target/Specificity

This MAP2 antibody is generated from rabbits immunized with MAP2 recombinant protein.

Dilution

WB~~1:1000

IHC-P~~1:50~100

FC~~1:10~50

E~~Use at an assay dependent concentration.

Format

Purified polyclonal antibody supplied in PBS with 0.09% (W/V) sodium azide. This antibody is prepared by Saturated Ammonium Sulfate (SAS) precipitation followed by dialysis against PBS.

Storage

Maintain refrigerated at 2-8°C for up to 2 weeks. For long term storage store at -20°C in small aliquots to prevent freeze-thaw cycles.

Precautions

MAP2 Antibody is for research use only and not for use in diagnostic or therapeutic procedures.

MAP2 Antibody - Protein Information**Name** MAP2**Function** The exact function of MAP2 is unknown but MAPs may stabilize the microtubules against depolymerization. They also seem to have a stiffening effect on microtubules.**Cellular Location**

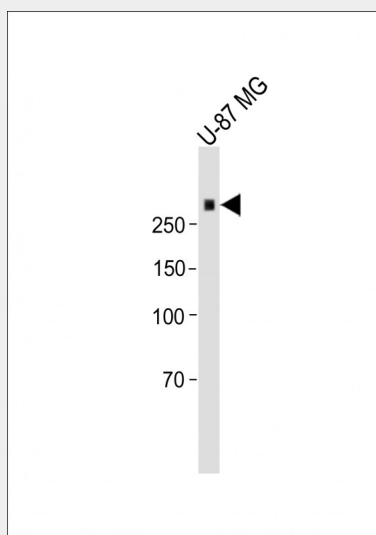
Cytoplasm, cytoskeleton. Cell projection, dendrite {ECO:0000250|UniProtKB:P20357}

MAP2 Antibody - Protocols

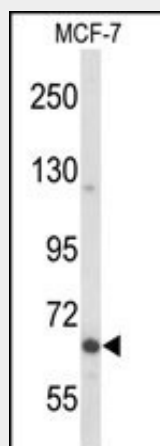
Provided below are standard protocols that you may find useful for product applications.

- [Western Blot](#)
- [Blocking Peptides](#)
- [Dot Blot](#)
- [Immunohistochemistry](#)
- [Immunofluorescence](#)
- [Immunoprecipitation](#)
- [Flow Cytometry](#)
- [Cell Culture](#)

MAP2 Antibody - Images

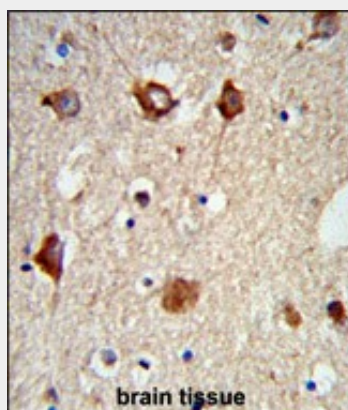


All lanes : Anti-MAP2 Antibody at 1:1000 dilution+ U-87 MG Cell lysate Lysates/proteins at 20 μ g per lane. Secondary Goat Anti-rabbit IgG, (H+L), Peroxidase conjugated (ASP1615) at 1/15000 dilution. Observed band size : 280kDa Blocking/Dilution buffer: 5% NFDM/TBST.

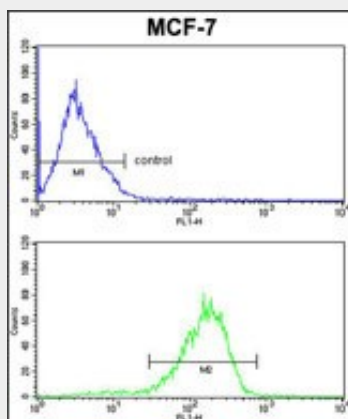


Western blot analysis of MAP2 Antibody (Cat. #AP2018e) in MCF-7 cell line lysates (35ug/lane).

MAP2 (arrow) was detected using the purified Pab.



Formalin-fixed and paraffin-embedded mouse brain tissue reacted with MAP2 Antibody, which was peroxidase-conjugated to the secondary antibody, followed by DAB staining. This data demonstrates the use of this antibody for immunohistochemistry; clinical relevance has not been evaluated.



MAP2 Antibody (Cat.#AP2018e) FC analysis of MCF-7 cells (bottom histogram) compared to a negative control cell (top histogram). FITC-conjugated goat-anti-rabbit secondary antibodies were used for the analysis.

MAP2 Antibody - Background

MAP2 encodes a protein that belongs to the microtubule-associated protein family. The proteins of this family are thought to be involved in microtubule assembly, which is an essential step in neurogenesis. The products of similar genes in rat and mouse are neuron-specific cytoskeletal proteins that are enriched in dendrites, implicating a role in determining and stabilizing dendritic shape during neuron development.

MAP2 Antibody - References

- Maddodi, N., et al. J. Biol. Chem. 285(1):242-254(2010)
- Krishnan, C., et al. Am. J. Surg. Pathol. 33(11):1695-1704(2009)
- Gambichler, T., et al. Am. J. Clin. Pathol. 131(5):710-714(2009)
- Martins-de-Souza, D., et al. Eur Arch Psychiatry Clin Neurosci 259(3):151-163(2009)
- Romeike, B.F., et al. Histopathology 54(4):504-505(2009)