

UBR1 Antibody (N-term)
Affinity Purified Rabbit Polyclonal Antibody (Pab)
Catalog # AP20192a

Specification

UBR1 Antibody (N-term) - Product Information

Application	WB,E
Primary Accession	Q8IWV7
Other Accession	O70481 , NP_777576.1
Reactivity	Mouse
Host	Rabbit
Clonality	Polyclonal
Isotype	Rabbit IgG
Antigen Region	245-274

UBR1 Antibody (N-term) - Additional Information

Gene ID 197131

Other Names

E3 ubiquitin-protein ligase UBR1, 632-, N-recogin-1, Ubiquitin-protein ligase E3-alpha-1, Ubiquitin-protein ligase E3-alpha-I, UBR1

Target/Specificity

This UBR1 antibody is generated from rabbits immunized with a KLH conjugated synthetic peptide between 245-274 amino acids from the N-terminal region of human UBR1.

Dilution

WB~~1:1000

Format

Purified polyclonal antibody supplied in PBS with 0.09% (W/V) sodium azide. This antibody is purified through a protein A column, followed by peptide affinity purification.

Storage

Maintain refrigerated at 2-8°C for up to 2 weeks. For long term storage store at -20°C in small aliquots to prevent freeze-thaw cycles.

Precautions

UBR1 Antibody (N-term) is for research use only and not for use in diagnostic or therapeutic procedures.

UBR1 Antibody (N-term) - Protein Information

Name UBR1

Function E3 ubiquitin-protein ligase which is a component of the N-end rule pathway. Recognizes and binds to proteins bearing specific N- terminal residues that are destabilizing according to the

N-end rule, leading to their ubiquitination and subsequent degradation. May be involved in pancreatic homeostasis. Binds leucine and is a negative regulator of the leucine-mTOR signaling pathway, thereby controlling cell growth.

Cellular Location

Cytoplasm, cytosol.

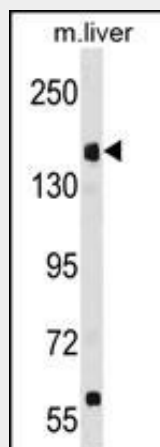
Tissue Location

Broadly expressed, with highest levels in skeletal muscle, kidney and pancreas. Present in acinar cells of the pancreas (at protein level).

UBR1 Antibody (N-term) - Protocols

Provided below are standard protocols that you may find useful for product applications.

- [Western Blot](#)
- [Blocking Peptides](#)
- [Dot Blot](#)
- [Immunohistochemistry](#)
- [Immunofluorescence](#)
- [Immunoprecipitation](#)
- [Flow Cytometry](#)
- [Cell Culture](#)

UBR1 Antibody (N-term) - Images

UBR1 Antibody (N-term) (Cat. #AP20192a) western blot analysis in mouse liver tissue lysates (35ug/lane). This demonstrates the UBR1 antibody detected the UBR1 protein (arrow).

UBR1 Antibody (N-term) - Background

The N-end rule pathway is one proteolytic pathway of the ubiquitin system. The recognition component of this pathway, encoded by this gene, binds to a destabilizing N-terminal residue of a substrate protein and participates in the formation of a substrate-linked multiubiquitin chain. This leads to the eventual degradation of the substrate protein. The protein described in this record has a RING-type zinc finger and a UBR-type zinc finger. Mutations in this gene have been associated with Johanson-Blizzard syndrome.

UBR1 Antibody (N-term) - References

Elting, M., et al. Am. J. Med. Genet. A 146A (23), 3058-3061 (2008) :
Alkhoury, N., et al. World J. Gastroenterol. 14(44):6863-6866(2008)
Yamaguchi, Y., et al. BMC Med. Genet. 9, 22 (2008) :
Schmidt, R.L., et al. Cancer Res. 67(24):11798-11810(2007)
Wei, S., et al. Mol. Pharmacol. 72(3):725-733(2007)