

SMAD6 Antibody (C-term)
Affinity Purified Rabbit Polyclonal Antibody (Pab)
Catalog # AP20196b**Specification**

SMAD6 Antibody (C-term) - Product Information

Application	WB,E
Primary Accession	O43541
Other Accession	O35182 , NP_005576.3
Reactivity	Mouse
Host	Rabbit
Clonality	Polyclonal
Isotype	Rabbit IgG
Calculated MW	53497
Antigen Region	357-386

SMAD6 Antibody (C-term) - Additional Information**Gene ID** 4091**Other Names**

Mothers against decapentaplegic homolog 6, MAD homolog 6, Mothers against DPP homolog 6, SMAD family member 6, SMAD 6, Smad6, hSMAD6, SMAD6, MADH6

Target/Specificity

This SMAD6 antibody is generated from rabbits immunized with a KLH conjugated synthetic peptide between 357-386 amino acids from the C-terminal region of human SMAD6.

Dilution

WB~~1:1000

E~~Use at an assay dependent concentration.

Format

Purified polyclonal antibody supplied in PBS with 0.09% (W/V) sodium azide. This antibody is purified through a protein A column, followed by peptide affinity purification.

Storage

Maintain refrigerated at 2-8°C for up to 2 weeks. For long term storage store at -20°C in small aliquots to prevent freeze-thaw cycles.

Precautions

SMAD6 Antibody (C-term) is for research use only and not for use in diagnostic or therapeutic procedures.

SMAD6 Antibody (C-term) - Protein Information**Name** SMAD6

Synonyms MADH6

Function Transforming growth factor-beta superfamily receptors signaling occurs through the Smad family of intracellular mediators. SMAD6 is an inhibitory Smad (i-Smad) that negatively regulates signaling downstream of type I transforming growth factor-beta (PubMed:[10647776](#), PubMed:[10708948](#), PubMed:[10708949](#), PubMed:[16951688](#), PubMed:[22275001](#), PubMed:[30848080](#), PubMed:[9436979](#), PubMed:[9759503](#)). Acts as a mediator of TGF-beta and BMP anti-inflammatory activities. Suppresses IL1R-TLR signaling through its direct interaction with PEL1, preventing NF-kappa-B activation, nuclear transport and NF-kappa-B- mediated expression of pro-inflammatory genes (PubMed:[16951688](#)). Blocks the BMP-SMAD1 signaling pathway by competing with SMAD4 for receptor- activated SMAD1-binding (PubMed:[30848080](#), PubMed:[9436979](#)). Binds to regulatory elements in target promoter regions (PubMed:[16491121](#)).

Cellular Location

Nucleus.

Tissue Location

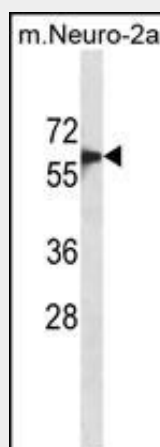
[Isoform B]: Expressed in the brain, heart, ovary, peripheral blood leukocytes, small intestine, spleen, thymus, bone marrow, fetal liver and lymph nodes.

SMAD6 Antibody (C-term) - Protocols

Provided below are standard protocols that you may find useful for product applications.

- [Western Blot](#)
- [Blocking Peptides](#)
- [Dot Blot](#)
- [Immunohistochemistry](#)
- [Immunofluorescence](#)
- [Immunoprecipitation](#)
- [Flow Cytometry](#)
- [Cell Culture](#)

SMAD6 Antibody (C-term) - Images



SMAD6 Antibody (C-term) (Cat. #AP20196b) western blot analysis in mouse Neuro-2a cell line lysates (35ug/lane). This demonstrates the SMAD6 antibody detected the SMAD6 protein (arrow).

SMAD6 Antibody (C-term) - Background

The protein encoded by this gene belongs to the SMAD family of proteins, which are related to *Drosophila* 'mothers against decapentaplegic' (Mad) and *C. elegans* Sma. SMAD proteins are signal transducers and transcriptional modulators that mediate multiple signaling pathways. This protein functions in the negative regulation of BMP and TGF-beta/activin-signalling. Multiple transcript variants encoding different isoforms have been found for this gene.

SMAD6 Antibody (C-term) - References

Ryan, J.D., et al. Hepatology 52(4):1266-1273(2010)
Mangone, F.R., et al. Mol. Cancer 9, 106 (2010) :
Tseng, Z.H., et al. Heart Rhythm 6(12):1745-1750(2009)
Yu, H., et al. Acta Derm. Venereol. 89(4):351-356(2009)
Verschuere, K., et al. Cytokine Growth Factor Rev. 10 (3-4), 187-199 (1999) :