

Mouse Ppm1h Antibody (Center)
Affinity Purified Rabbit Polyclonal Antibody (Pab)
Catalog # AP20216c

Specification

Mouse Ppm1h Antibody (Center) - Product Information

Application	WB,E
Primary Accession	Q3UYC0
Other Accession	Q5M821 , NP_001103688.1
Reactivity	Mouse
Predicted	Rat
Host	Rabbit
Clonality	Polyclonal
Isotype	Rabbit IgG
Calculated MW	56380
Antigen Region	234-262

Mouse Ppm1h Antibody (Center) - Additional Information

Gene ID 319468

Other Names

Protein phosphatase 1H, Ppm1h, Kiaa1157

Target/Specificity

This Mouse Ppm1h antibody is generated from rabbits immunized with a KLH conjugated synthetic peptide between 234-262 amino acids from the Central region of mouse Ppm1h.

Dilution

WB~~1:1000

E~~Use at an assay dependent concentration.

Format

Purified polyclonal antibody supplied in PBS with 0.09% (W/V) sodium azide. This antibody is purified through a protein A column, followed by peptide affinity purification.

Storage

Maintain refrigerated at 2-8°C for up to 2 weeks. For long term storage store at -20°C in small aliquots to prevent freeze-thaw cycles.

Precautions

Mouse Ppm1h Antibody (Center) is for research use only and not for use in diagnostic or therapeutic procedures.

Mouse Ppm1h Antibody (Center) - Protein Information

Name Ppm1h

Synonyms Kiaa1157

Function Dephosphorylates CDKN1B at 'Thr-187', thus removing a signal for proteasomal degradation.

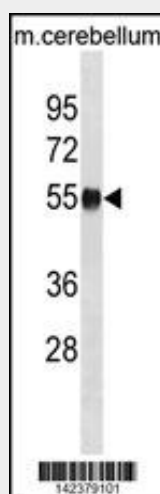
Cellular Location

Nucleus {ECO:0000250|UniProtKB:Q9ULR3}. Cytoplasm {ECO:0000250|UniProtKB:Q9ULR3}

Mouse Ppm1h Antibody (Center) - Protocols

Provided below are standard protocols that you may find useful for product applications.

- [Western Blot](#)
- [Blocking Peptides](#)
- [Dot Blot](#)
- [Immunohistochemistry](#)
- [Immunofluorescence](#)
- [Immunoprecipitation](#)
- [Flow Cytometry](#)
- [Cell Culture](#)

Mouse Ppm1h Antibody (Center) - Images

MOUSE Ppm1h Antibody (Center) (Cat. #AP20216c) western blot analysis in mouse cerebellum tissue lysates (35ug/lane). This demonstrates the MOUSE Ppm1h antibody detected the MOUSE Ppm1h protein (arrow).

Mouse Ppm1h Antibody (Center) - Background

The function of this protein is unknown.

Mouse Ppm1h Antibody (Center) - References

Coulpier, F., et al. Glia 57(13):1450-1457(2009)
Nishimura, M., et al. DNA Res. 11(5):315-323(2004)