

**Mouse Ublcp1 Antibody (Center)**  
**Affinity Purified Rabbit Polyclonal Antibody (Pab)**  
**Catalog # AP20225c**

**Specification**

---

**Mouse Ublcp1 Antibody (Center) - Product Information**

Application	WB,E
Primary Accession	<a href="#">Q8BGR9</a>
Other Accession	<a href="#">NP_077795.2</a>
Reactivity	Mouse
Host	Rabbit
Clonality	Polyclonal
Isotype	Rabbit IgG
Calculated MW	36837
Antigen Region	102-128

**Mouse Ublcp1 Antibody (Center) - Additional Information**

**Gene ID** 79560

**Other Names**

Ubiquitin-like domain-containing CTD phosphatase 1, Nuclear proteasome inhibitor UBLCP1, Ublcp1

**Target/Specificity**

This Mouse Ublcp1 antibody is generated from rabbits immunized with a KLH conjugated synthetic peptide between 102-128 amino acids from the Central region of mouse Ublcp1.

**Dilution**

WB~~1:1000

E~~Use at an assay dependent concentration.

**Format**

Purified polyclonal antibody supplied in PBS with 0.09% (W/V) sodium azide. This antibody is purified through a protein A column, followed by peptide affinity purification.

**Storage**

Maintain refrigerated at 2-8°C for up to 2 weeks. For long term storage store at -20°C in small aliquots to prevent freeze-thaw cycles.

**Precautions**

Mouse Ublcp1 Antibody (Center) is for research use only and not for use in diagnostic or therapeutic procedures.

**Mouse Ublcp1 Antibody (Center) - Protein Information**

**Name** Ublcp1

**Function** Dephosphorylates 26S nuclear proteasomes, thereby decreasing their proteolytic activity. Recruited to the 19S regulatory particle of the 26S proteasome through its interaction with 19S component PSMD2/RPN1. Once recruited, dephosphorylates 19S component PSMC2/RPT1 which impairs PSMC2 ATPase activity and disrupts 26S proteasome assembly. Has also been reported to stimulate the proteolytic activity of the 26S proteasome.

#### **Cellular Location**

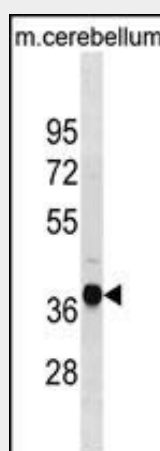
Nucleus {ECO:0000250|UniProtKB:Q8WVY7}. Note=Colocalizes with nuclear proteasomes {ECO:0000250|UniProtKB:Q8WVY7}

### **Mouse Ublcp1 Antibody (Center) - Protocols**

Provided below are standard protocols that you may find useful for product applications.

- [Western Blot](#)
- [Blocking Peptides](#)
- [Dot Blot](#)
- [Immunohistochemistry](#)
- [Immunofluorescence](#)
- [Immunoprecipitation](#)
- [Flow Cytometry](#)
- [Cell Culture](#)

### **Mouse Ublcp1 Antibody (Center) - Images**



MOUSE Ublcp1 Antibody (Center) (Cat. #AP20225c) western blot analysis in mouse cerebellum tissue lysates (35ug/lane). This demonstrates the MOUSE Ublcp1 antibody detected the MOUSE Ublcp1 protein (arrow).

### **Mouse Ublcp1 Antibody (Center) - Background**

May specifically dephosphorylate 'Ser-5' of the heptad repeats YSPTSPS in the C-terminal domain of the largest RNA polymerase II subunit (By similarity).

### **Mouse Ublcp1 Antibody (Center) - References**

Zambrowicz, B.P., et al. Proc. Natl. Acad. Sci. U.S.A. 100(24):14109-14114(2003)  
Sasaki, N., et al. Genomics 49(2):167-179(1998)