

VAMP4 Antibody (Center)
Affinity Purified Rabbit Polyclonal Antibody (Pab)
Catalog # AP20234c**Specification**

VAMP4 Antibody (Center) - Product Information

Application	WB,E
Primary Accession	O75379
Other Accession	O70480 , Q32L97 , NP_003753.2
Reactivity	Human
Predicted	Bovine, Mouse
Host	Rabbit
Clonality	Polyclonal
Isotype	Rabbit IgG
Calculated MW	16397
Antigen Region	61-90

VAMP4 Antibody (Center) - Additional Information**Gene ID** 8674**Other Names**

Vesicle-associated membrane protein 4, VAMP-4, VAMP4

Target/Specificity

This VAMP4 antibody is generated from rabbits immunized with a KLH conjugated synthetic peptide between 61-90 amino acids from the Central region of human VAMP4.

Dilution

WB~~1:1000

E~~Use at an assay dependent concentration.

Format

Purified polyclonal antibody supplied in PBS with 0.09% (W/V) sodium azide. This antibody is purified through a protein A column, followed by peptide affinity purification.

Storage

Maintain refrigerated at 2-8°C for up to 2 weeks. For long term storage store at -20°C in small aliquots to prevent freeze-thaw cycles.

Precautions

VAMP4 Antibody (Center) is for research use only and not for use in diagnostic or therapeutic procedures.

VAMP4 Antibody (Center) - Protein Information**Name** VAMP4

Function Involved in the pathway that functions to remove an inhibitor (probably synaptotagmin-4) of calcium-triggered exocytosis during the maturation of secretory granules. May be a marker for this sorting pathway that is critical for remodeling the secretory response of granule.

Cellular Location

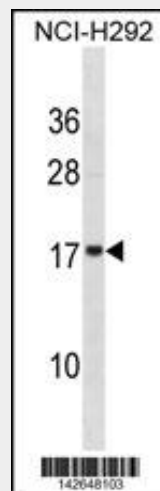
Golgi apparatus, trans-Golgi network membrane; Single-pass type IV membrane protein
Note=Associated with trans Golgi network (TGN) and newly formed immature secretory granules (ISG). Not found on the mature secretory organelles

VAMP4 Antibody (Center) - Protocols

Provided below are standard protocols that you may find useful for product applications.

- [Western Blot](#)
- [Blocking Peptides](#)
- [Dot Blot](#)
- [Immunohistochemistry](#)
- [Immunofluorescence](#)
- [Immunoprecipitation](#)
- [Flow Cytometry](#)
- [Cell Culture](#)

VAMP4 Antibody (Center) - Images



VAMP4 Antibody (Center) (Cat. #AP20234c) western blot analysis in NCI-H292 cell line lysates (35ug/lane). This demonstrates the VAMP4 antibody detected the VAMP4 protein (arrow).

VAMP4 Antibody (Center) - Background

Synaptobrevins/VAMPs, syntaxins, and the 25-kD synaptosomal-associated protein SNAP25 are the main components of a protein complex involved in the docking and/or fusion of synaptic vesicles with the presynaptic membrane. The protein encoded by this gene is a member of the vesicle-associated membrane protein (VAMP)/synaptobrevin family. This protein may play a role in trans-Golgi network-to-endosome transport.

VAMP4 Antibody (Center) - References

Olsen, J.V., et al. Cell 127(3):635-648(2006)

Olsen, J.V., et al. Cell 127(3):635-648(2006)

Sabra, M.M., et al. Mol. Genet. Metab. 85(2):133-139(2005)

Ballif, B.A., et al. Mol. Cell Proteomics 3(11):1093-1101(2004)

Hinners, I., et al. EMBO Rep. 4(12):1182-1189(2003)