

MEX3C Antibody (C-term)
Affinity Purified Rabbit Polyclonal Antibody (Pab)
Catalog # AP20253b**Specification**

MEX3C Antibody (C-term) - Product Information

Application	WB,E
Primary Accession	Q5U5Q3
Other Accession	Q05A36 , NP_057710.3
Reactivity	Human
Predicted	Mouse
Host	Rabbit
Clonality	Polyclonal
Isotype	Rabbit IgG
Calculated MW	69366
Antigen Region	536-564

MEX3C Antibody (C-term) - Additional Information**Gene ID** 51320**Other Names**

RNA-binding E3 ubiquitin-protein ligase MEX3C, 632-, RING finger and KH domain-containing protein 2, RING finger protein 194, MEX3C, RKHD2, RNF194

Target/Specificity

This MEX3C antibody is generated from rabbits immunized with a KLH conjugated synthetic peptide between 536-564 amino acids from the C-terminal region of human MEX3C.

Dilution

WB~~1:1000

E~~Use at an assay dependent concentration.

Format

Purified polyclonal antibody supplied in PBS with 0.09% (W/V) sodium azide. This antibody is purified through a protein A column, followed by peptide affinity purification.

Storage

Maintain refrigerated at 2-8°C for up to 2 weeks. For long term storage store at -20°C in small aliquots to prevent freeze-thaw cycles.

Precautions

MEX3C Antibody (C-term) is for research use only and not for use in diagnostic or therapeutic procedures.

MEX3C Antibody (C-term) - Protein Information**Name** MEX3C

Synonyms RKHD2, RNF194

Function E3 ubiquitin ligase responsible for the post-transcriptional regulation of common HLA-A allotypes. Binds to the 3' UTR of HLA-A2 mRNA, and regulates its levels by promoting mRNA decay. RNA binding is sufficient to prevent translation, but ubiquitin ligase activity is required for mRNA degradation.

Cellular Location

Cytoplasm. Nucleus. Note=Predominantly expressed in the cytoplasm and shuttles between the cytoplasm and the nucleus through the CRM1 export pathway. May act as suppressor of replication stress and chromosome missegregation

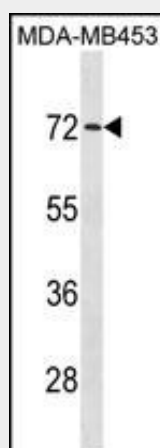
Tissue Location

Highest levels found in fetal brain and testis. Also expressed in thymus, salivary gland and uterus. Highly expressed in cells of the innate immune system, in particular activated NK cells. Weak expression in the intestine.

MEX3C Antibody (C-term) - Protocols

Provided below are standard protocols that you may find useful for product applications.

- [Western Blot](#)
- [Blocking Peptides](#)
- [Dot Blot](#)
- [Immunohistochemistry](#)
- [Immunofluorescence](#)
- [Immunoprecipitation](#)
- [Flow Cytometry](#)
- [Cell Culture](#)

MEX3C Antibody (C-term) - Images

MEX3C Antibody (C-term) (Cat. #AP20253b) western blot analysis in MDA-MB453 cell line lysates (35ug/lane). This demonstrates the MEX3C antibody detected the MEX3C protein (arrow).

MEX3C Antibody (C-term) - Background

This gene encodes a member of a family of proteins with two K homology (KH) RNA-binding domains and a C-terminal RING-finger domain. The protein interacts with mRNA via the KH

domains, and the protein shuttles between the nucleus and cytoplasm. Polymorphisms in this gene may contribute to hypertension.

MEX3C Antibody (C-term) - References

Rose, J.E., et al. Mol. Med. 16 (7-8), 247-253 (2010) :
Buchet-Poyau, K., et al. Nucleic Acids Res. 35(4):1289-1300(2007)
Guzman, B., et al. Hypertension 48(5):883-891(2006)
Nusbaum, C., et al. Nature 437(7058):551-555(2005)