

OR2B6 Antibody (C-term)
Affinity Purified Rabbit Polyclonal Antibody (Pab)
Catalog # AP20256b**Specification**

OR2B6 Antibody (C-term) - Product Information

Application	WB,E
Primary Accession	P58173
Other Accession	NP_036499.1
Reactivity	Human
Host	Rabbit
Clonality	Polyclonal
Isotype	Rabbit IgG
Calculated MW	35414
Antigen Region	208-236

OR2B6 Antibody (C-term) - Additional Information**Gene ID** 26212**Other Names**

Olfactory receptor 2B6, Hs6M1-32, Olfactory receptor 2B1, Olfactory receptor 2B5, Olfactory receptor 5-40, OR5-40, Olfactory receptor 6-31, OR6-31, Olfactory receptor OR6-4, OR2B6, OR2B1, OR2B1P, OR2B5, OR2B6P

Target/Specificity

This OR2B6 antibody is generated from rabbits immunized with a KLH conjugated synthetic peptide between 208-236 amino acids from the C-terminal region of human OR2B6.

Dilution

WB~~1:1000

E~~Use at an assay dependent concentration.

Format

Purified polyclonal antibody supplied in PBS with 0.09% (W/V) sodium azide. This antibody is purified through a protein A column, followed by peptide affinity purification.

Storage

Maintain refrigerated at 2-8°C for up to 2 weeks. For long term storage store at -20°C in small aliquots to prevent freeze-thaw cycles.

Precautions

OR2B6 Antibody (C-term) is for research use only and not for use in diagnostic or therapeutic procedures.

OR2B6 Antibody (C-term) - Protein Information**Name** OR2B6 ([HGNC:8241](#))

Function Odorant receptor.

Cellular Location

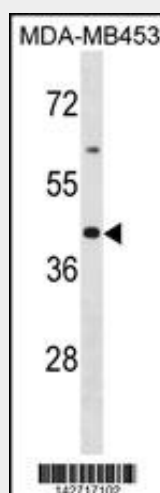
Cell membrane; Multi-pass membrane protein

OR2B6 Antibody (C-term) - Protocols

Provided below are standard protocols that you may find useful for product applications.

- [Western Blot](#)
- [Blocking Peptides](#)
- [Dot Blot](#)
- [Immunohistochemistry](#)
- [Immunofluorescence](#)
- [Immunoprecipitation](#)
- [Flow Cytometry](#)
- [Cell Culture](#)

OR2B6 Antibody (C-term) - Images



OR2B6 Antibody (C-term) (Cat. #AP20256b) western blot analysis in MDA-MB453 cell line lysates (35ug/lane). This demonstrates the OR2B6 antibody detected the OR2B6 protein (arrow).

OR2B6 Antibody (C-term) - Background

Olfactory receptors interact with odorant molecules in the nose, to initiate a neuronal response that triggers the perception of a smell. The olfactory receptor proteins are members of a large family of G-protein-coupled receptors (GPCR) arising from single coding-exon genes. Olfactory receptors share a 7-transmembrane domain structure with many neurotransmitter and hormone receptors and are responsible for the recognition and G protein-mediated transduction of odorant signals. The olfactory receptor gene family is the largest in the genome. The nomenclature assigned to the olfactory receptor genes and proteins for this organism is independent of other organisms.

OR2B6 Antibody (C-term) - References

Malnic, B., et al. Proc. Natl. Acad. Sci. U.S.A. 101(8):2584-2589(2004)
Mungall, A.J., et al. Nature 425(6960):805-811(2003)
Rouquier, S., et al. Nat. Genet. 18(3):243-250(1998)