

POLR2H Antibody (Center)
Affinity Purified Rabbit Polyclonal Antibody (Pab)
Catalog # AP20263c

Specification

POLR2H Antibody (Center) - Product Information

Application	WB,E
Primary Accession	P52434
Other Accession	O923G2 , NP_006223.2 , F2Z4H3
Reactivity	Human
Predicted	Bovine, Mouse
Host	Rabbit
Clonality	Polyclonal
Isotype	Rabbit IgG
Calculated MW	17143
Antigen Region	59-87

POLR2H Antibody (Center) - Additional Information

Gene ID 5437

Other Names

DNA-directed RNA polymerases I, II, and III subunit RPABC3, RNA polymerases I, II, and III subunit ABC3, DNA-directed RNA polymerase II subunit H, DNA-directed RNA polymerases I, II, and III 171 kDa polypeptide, RPB17, RPB8 homolog, hRPB8, POLR2H

Target/Specificity

This POLR2H antibody is generated from rabbits immunized with a KLH conjugated synthetic peptide between 59-87 amino acids from the Central region of human POLR2H.

Dilution

WB~~1:1000

E~~Use at an assay dependent concentration.

Format

Purified polyclonal antibody supplied in PBS with 0.09% (W/V) sodium azide. This antibody is purified through a protein A column, followed by peptide affinity purification.

Storage

Maintain refrigerated at 2-8°C for up to 2 weeks. For long term storage store at -20°C in small aliquots to prevent freeze-thaw cycles.

Precautions

POLR2H Antibody (Center) is for research use only and not for use in diagnostic or therapeutic procedures.

POLR2H Antibody (Center) - Protein Information

Name POLR2H ([HGNC:9195](#))

Function DNA-dependent RNA polymerase catalyzes the transcription of DNA into RNA using the four ribonucleoside triphosphates as substrates. Common component of RNA polymerases I, II and III which synthesize ribosomal RNA precursors, mRNA precursors and many functional non-coding RNAs, and small RNAs, such as 5S rRNA and tRNAs, respectively.

Cellular Location

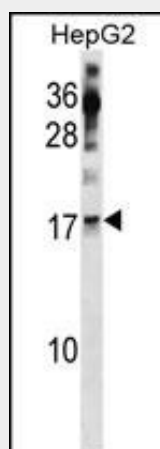
Nucleus {ECO:0000269|PubMed:33335104, ECO:0000269|PubMed:9852112, ECO:0000269|Ref.6}.
Nucleus, nucleolus

POLR2H Antibody (Center) - Protocols

Provided below are standard protocols that you may find useful for product applications.

- [Western Blot](#)
- [Blocking Peptides](#)
- [Dot Blot](#)
- [Immunohistochemistry](#)
- [Immunofluorescence](#)
- [Immunoprecipitation](#)
- [Flow Cytometry](#)
- [Cell Culture](#)

POLR2H Antibody (Center) - Images



POLR2H Antibody (Center) (Cat. #AP20263c) western blot analysis in HepG2 cell line lysates (35ug/lane). This demonstrates the POLR2H antibody detected the POLR2H protein (arrow).

POLR2H Antibody (Center) - Background

This gene encodes one of the essential subunits of RNA polymerase II that is shared by the other two eukaryotic DNA-directed RNA polymerases, I and III.

POLR2H Antibody (Center) - References

Davila, S., et al. Genes Immun. 11(3):232-238(2010)
Michiels, S., et al. Carcinogenesis 30(5):763-768(2009)
Ewing, R.M., et al. Mol. Syst. Biol. 3, 89 (2007) :

Kang, X., et al. J. Biol. Chem. 281(26):18216-18226(2006)
Andersen, J.S., et al. Nature 433(7021):77-83(2005)