

**PSMD6 Antibody (Center)**  
**Affinity Purified Rabbit Polyclonal Antibody (Pab)**  
**Catalog # AP20266C**

**Specification**

---

**PSMD6 Antibody (Center) - Product Information**

Application	WB,E
Primary Accession	<a href="#">Q15008</a>
Other Accession	<a href="#">Q99JI4</a> , <a href="#">Q9V3G7</a> , <a href="#">Q3T0B2</a> , <a href="#">NP_055629.1</a>
Reactivity	Human
Predicted	Bovine, Drosophila, Mouse
Host	Rabbit
Clonality	Polyclonal
Isotype	Rabbit IgG
Calculated MW	45531
Antigen Region	154-182

**PSMD6 Antibody (Center) - Additional Information**

**Gene ID** 9861

**Other Names**

26S proteasome non-ATPase regulatory subunit 6, 26S proteasome regulatory subunit RPN7, 26S proteasome regulatory subunit S10, Breast cancer-associated protein SGA-113M, Phosphonoformate immuno-associated protein 4, Proteasome regulatory particle subunit p44S10, p42A, PSMD6, KIAA0107, PFAAP4

**Target/Specificity**

This PSMD6 antibody is generated from rabbits immunized with a KLH conjugated synthetic peptide between 154-182 amino acids from the Central region of human PSMD6.

**Dilution**

WB~~1:1000

E~~Use at an assay dependent concentration.

**Format**

Purified polyclonal antibody supplied in PBS with 0.09% (W/V) sodium azide. This antibody is purified through a protein A column, followed by peptide affinity purification.

**Storage**

Maintain refrigerated at 2-8°C for up to 2 weeks. For long term storage store at -20°C in small aliquots to prevent freeze-thaw cycles.

**Precautions**

PSMD6 Antibody (Center) is for research use only and not for use in diagnostic or therapeutic procedures.

**PSMD6 Antibody (Center) - Protein Information**

**Name** PSMD6

**Synonyms** KIAA0107, PFAAP4

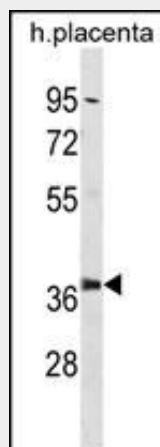
**Function** Component of the 26S proteasome, a multiprotein complex involved in the ATP-dependent degradation of ubiquitinated proteins. This complex plays a key role in the maintenance of protein homeostasis by removing misfolded or damaged proteins, which could impair cellular functions, and by removing proteins whose functions are no longer required. Therefore, the proteasome participates in numerous cellular processes, including cell cycle progression, apoptosis, or DNA damage repair.

### PSMD6 Antibody (Center) - Protocols

Provided below are standard protocols that you may find useful for product applications.

- [Western Blot](#)
- [Blocking Peptides](#)
- [Dot Blot](#)
- [Immunohistochemistry](#)
- [Immunofluorescence](#)
- [Immunoprecipitation](#)
- [Flow Cytometry](#)
- [Cell Culture](#)

### PSMD6 Antibody (Center) - Images



PSMD6 Antibody (Center) (Cat. #AP20266c) western blot analysis in human placenta tissue lysates (35ug/lane). This demonstrates the PSMD6 antibody detected the PSMD6 protein (arrow).

### PSMD6 Antibody (Center) - Background

Acts as a regulatory subunit of the 26S proteasome which is involved in the ATP-dependent degradation of ubiquitinated proteins.

### PSMD6 Antibody (Center) - References

Tanaka, T., et al. Am. J. Hum. Genet. 84(4):477-482(2009)  
Ewing, R.M., et al. Mol. Syst. Biol. 3, 89 (2007) :  
Listovsky, T., et al. EMBO J. 23(7):1619-1626(2004)  
Bouwmeester, T., et al. Nat. Cell Biol. 6(2):97-105(2004)

Margottin-Goguet, F., et al. Dev. Cell 4(6):813-826(2003)