

**CHN1 Antibody (N-term)**  
**Affinity Purified Rabbit Polyclonal Antibody (Pab)**  
**Catalog # AP20274a****Specification**

---

**CHN1 Antibody (N-term) - Product Information**

|                   |   |
|-------------------|---|
| Application       | WB,E  |
| Primary Accession | <a href="#">P15882</a>                                  |
| Other Accession   | <a href="#">O91V57</a> , <a href="#">NP_001020372.2</a> |
| Reactivity        | Human   |
| Predicted         | Mouse   |
| Host              | Rabbit  |
| Clonality         | Polyclonal  |
| Isotype           | Rabbit IgG  |
| Calculated MW     | 53172   |
| Antigen Region    | 1-30  |

**CHN1 Antibody (N-term) - Additional Information****Gene ID** 1123**Other Names**

N-chimaerin, A-chimaerin, Alpha-chimerin, N-chimerin, NC, Rho GTPase-activating protein 2, CHN1, ARHGAP2, CHN

**Target/Specificity**

This CHN1 antibody is generated from rabbits immunized with a KLH conjugated synthetic peptide between 1-30 amino acids from the N-terminal region of human CHN1.

**Dilution**

WB~~1:1000

E~~Use at an assay dependent concentration.

**Format**

Purified polyclonal antibody supplied in PBS with 0.09% (W/V) sodium azide. This antibody is purified through a protein A column, followed by peptide affinity purification.

**Storage**

Maintain refrigerated at 2-8°C for up to 2 weeks. For long term storage store at -20°C in small aliquots to prevent freeze-thaw cycles.

**Precautions**

CHN1 Antibody (N-term) is for research use only and not for use in diagnostic or therapeutic procedures.

**CHN1 Antibody (N-term) - Protein Information****Name** CHN1

**Synonyms** ARHGAP2, CHN

**Function** GTPase-activating protein for p21-rac and a phorbol ester receptor. Involved in the assembly of neuronal locomotor circuits as a direct effector of EPHA4 in axon guidance.

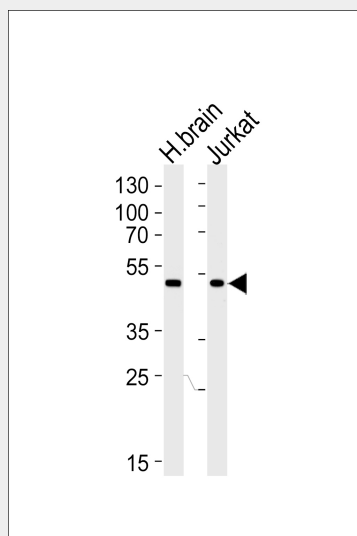
**Tissue Location**

In neurons in brain regions that are involved in learning and memory processes

**CHN1 Antibody (N-term) - Protocols**

Provided below are standard protocols that you may find useful for product applications.

- [Western Blot](#)
- [Blocking Peptides](#)
- [Dot Blot](#)
- [Immunohistochemistry](#)
- [Immunofluorescence](#)
- [Immunoprecipitation](#)
- [Flow Cytometry](#)
- [Cell Culture](#)

**CHN1 Antibody (N-term) - Images**

Western blot analysis of lysates from human brain tissue lysate and Jurkat cell line (from left to right), using CHN1 Antibody (N-term)(Cat. #AP20274a). AP20274a was diluted at 1:1000 at each lane. A goat anti-rabbit IgG H&L(HRP) at 1:5000 dilution was used as the secondary antibody. Lysates at 35ug per lane.

**CHN1 Antibody (N-term) - Background**

This gene encodes GTPase-activating protein for p21-rac and a phorbol ester receptor. It plays an important role in ocular motor axon pathfinding. Heterozygous missense mutations in this gene cause Duane's retraction syndrome 2 (DURS2). Multiple transcript variants encoding different isoforms have been found for this gene.

**CHN1 Antibody (N-term) - References**

Volk, A.E., et al. Graefes Arch. Clin. Exp. Ophthalmol. 248(9):1351-1357(2010)  
Dick, D.M., et al. Am. J. Med. Genet. B Neuropsychiatr. Genet. 153B (6), 1179-1188 (2010) :  
Rose, J.E., et al. Mol. Med. 16 (7-8), 247-253 (2010) :  
Miyake, N., et al. Am. J. Med. Genet. A 152A (1), 215-217 (2010) :  
Murillo-Correa, C.E., et al. J AAPOS 13(3):245-248(2009)