

**SFXN1 Antibody (C-term)**  
**Affinity Purified Rabbit Polyclonal Antibody (Pab)**  
**Catalog # AP20281b**

**Specification**

---

**SFXN1 Antibody (C-term) - Product Information**

Application	WB,E
Primary Accession	<a href="#">O9H9B4</a>
Other Accession	<a href="#">NP_073591.2</a>
Reactivity	Human
Host	Rabbit
Clonality	Polyclonal
Isotype	Rabbit IgG
Calculated MW	35619
Antigen Region	293-321

**SFXN1 Antibody (C-term) - Additional Information**

**Gene ID** 94081

**Other Names**

Sideroflexin-1, Tricarboxylate carrier protein, TCC, SFXN1

**Target/Specificity**

This SFXN1 antibody is generated from rabbits immunized with a KLH conjugated synthetic peptide between 293-321 amino acids from the C-terminal region of human SFXN1.

**Dilution**

WB~~1:1000

**Format**

Purified polyclonal antibody supplied in PBS with 0.09% (W/V) sodium azide. This antibody is purified through a protein A column, followed by peptide affinity purification.

**Storage**

Maintain refrigerated at 2-8°C for up to 2 weeks. For long term storage store at -20°C in small aliquots to prevent freeze-thaw cycles.

**Precautions**

SFXN1 Antibody (C-term) is for research use only and not for use in diagnostic or therapeutic procedures.

**SFXN1 Antibody (C-term) - Protein Information**

**Name** SFXN1 ([HGNC:16085](#))

**Function** Amino acid transporter importing serine, an essential substrate of the mitochondrial branch of the one-carbon pathway, into mitochondria. Mitochondrial serine is then converted to

glycine and formate, which exits to the cytosol where it is used to generate the charged folates that serve as one-carbon donors (PubMed:[30442778](#)). May also transport other amino acids including alanine and cysteine (PubMed:[30442778](#)).

#### Cellular Location

Mitochondrion inner membrane; Multi-pass membrane protein

#### Tissue Location

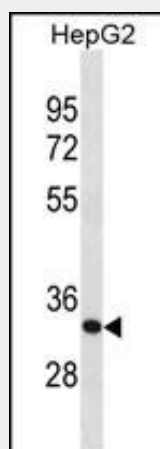
Highly expressed in tissues with high one-carbon metabolism activity, such as blood, liver and kidney

### SFXN1 Antibody (C-term) - Protocols

Provided below are standard protocols that you may find useful for product applications.

- [Western Blot](#)
- [Blocking Peptides](#)
- [Dot Blot](#)
- [Immunohistochemistry](#)
- [Immunofluorescence](#)
- [Immunoprecipitation](#)
- [Flow Cytometry](#)
- [Cell Culture](#)

### SFXN1 Antibody (C-term) - Images



SFXN1 Antibody (C-term) (Cat. #AP20281b) western blot analysis in HepG2 cell line lysates (35ug/lane). This demonstrates the SFXN1 antibody detected the SFXN1 protein (arrow).

### SFXN1 Antibody (C-term) - Background

Might be involved in the transport of a component required for iron utilization into or out of the mitochondria.

### SFXN1 Antibody (C-term) - References

Ewing, R.M., et al. Mol. Syst. Biol. 3, 89 (2007) :  
Siculella, L., et al. FEBS Lett. 578(3):280-284(2004)  
Siculella, L., et al. J. Lipid Res. 45(7):1333-1340(2004)  
Giudetti, A.M., et al. J. Lipid Res. 44(11):2135-2141(2003)

Miyake, S., et al. Biochem. Biophys. Res. Commun. 295(2):463-468(2002)