

C8orf44 Antibody (C-term)
Affinity Purified Rabbit Polyclonal Antibody (Pab)
Catalog # AP20293b

Specification

C8orf44 Antibody (C-term) - Product Information

Application	WB,E
Primary Accession	Q96CB5
Reactivity	Human
Host	Rabbit
Clonality	Polyclonal
Isotype	Rabbit IgG
Calculated MW	18380
Antigen Region	118-146

C8orf44 Antibody (C-term) - Additional Information

Other Names

Putative uncharacterized protein C8orf44, C8orf44

Target/Specificity

This C8orf44 antibody is generated from rabbits immunized with a KLH conjugated synthetic peptide between 118-146 amino acids from the C-terminal region of human C8orf44.

Dilution

WB~~1:1000

E~~Use at an assay dependent concentration.

Format

Purified polyclonal antibody supplied in PBS with 0.09% (W/V) sodium azide. This antibody is purified through a protein A column, followed by peptide affinity purification.

Storage

Maintain refrigerated at 2-8°C for up to 2 weeks. For long term storage store at -20°C in small aliquots to prevent freeze-thaw cycles.

Precautions

C8orf44 Antibody (C-term) is for research use only and not for use in diagnostic or therapeutic procedures.

C8orf44 Antibody (C-term) - Protein Information

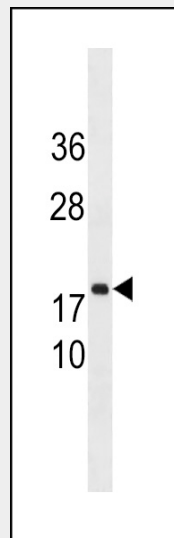
Name C8orf44

C8orf44 Antibody (C-term) - Protocols

Provided below are standard protocols that you may find useful for product applications.

- [Western Blot](#)
- [Blocking Peptides](#)
- [Dot Blot](#)
- [Immunohistochemistry](#)
- [Immunofluorescence](#)
- [Immunoprecipitation](#)
- [Flow Cytometry](#)
- [Cell Culture](#)

C8orf44 Antibody (C-term) - Images



C8orf44 Antibody (C-term) (Cat. #AP20293b) western blot analysis in SK-BR-3 cell line lysates (35ug/lane). This demonstrates the C8orf44 antibody detected the C8orf44 protein (arrow).

C8orf44 Antibody (C-term) - Background

The function of this protein remains unknown.