

SPRY3 Antibody (C-term)
Affinity Purified Rabbit Polyclonal Antibody (Pab)
Catalog # AP20296b

Specification

SPRY3 Antibody (C-term) - Product Information

Application	WB,E
Primary Accession	O43610
Reactivity	Human
Host	Rabbit
Clonality	Polyclonal
Isotype	Rabbit IgG
Calculated MW	31222
Antigen Region	261-288

SPRY3 Antibody (C-term) - Additional Information

Gene ID 10251

Other Names

Protein sprouty homolog 3, Spry-3, SPRY3

Target/Specificity

This SPRY3 antibody is generated from rabbits immunized with a KLH conjugated synthetic peptide between 261-288 amino acids from the C-terminal region of human SPRY3.

Dilution

WB~~1:1000

E~~Use at an assay dependent concentration.

Format

Purified polyclonal antibody supplied in PBS with 0.09% (W/V) sodium azide. This antibody is purified through a protein A column, followed by peptide affinity purification.

Storage

Maintain refrigerated at 2-8°C for up to 2 weeks. For long term storage store at -20°C in small aliquots to prevent freeze-thaw cycles.

Precautions

SPRY3 Antibody (C-term) is for research use only and not for use in diagnostic or therapeutic procedures.

SPRY3 Antibody (C-term) - Protein Information

Name SPRY3 ([HGNC:11271](#))

Function Inhibits neurite branching, arbor length and neurite complexity (By similarity). Inhibits EGF-mediated p42/44 ERK signaling (By similarity). Negatively regulates the MAPK cascade,

resulting in a reduction of extracellular matrix protein accumulation (PubMed:[30878395](#)). May function as an antagonist of fibroblast growth factor (FGF) pathways and may negatively modulate respiratory organogenesis (PubMed:[9458049](#)).

Cellular Location

Cytoplasm.

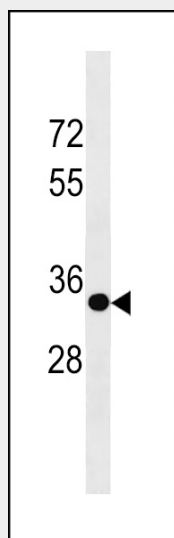
Tissue Location

Widely expressed; particularly in the fetal tissues. Expressed in the brain with expression the highest in Purkinje cells in the cerebellum (at protein level) (PubMed:26089202). Expressed in the myocardium of the heart (PubMed:30878395)

SPRY3 Antibody (C-term) - Protocols

Provided below are standard protocols that you may find useful for product applications.

- [Western Blot](#)
- [Blocking Peptides](#)
- [Dot Blot](#)
- [Immunohistochemistry](#)
- [Immunofluorescence](#)
- [Immunoprecipitation](#)
- [Flow Cytometry](#)
- [Cell Culture](#)

SPRY3 Antibody (C-term) - Images

SPRY3 Antibody (C-term) (Cat. #AP20296b) western blot analysis in 293 cell line lysates (35ug/lane). This demonstrates the SPRY3 antibody detected the SPRY3 protein (arrow).

SPRY3 Antibody (C-term) - Background

May function as an antagonist of fibroblast growth factor (FGF) pathways and may negatively modulate respiratory organogenesis.