

**TAF1B Antibody (Center)**  
**Affinity Purified Rabbit Polyclonal Antibody (Pab)**  
**Catalog # AP20297c**

**Specification**

---

**TAF1B Antibody (Center) - Product Information**

Application	WB,E
Primary Accession	<a href="#">Q53T94</a>
Other Accession	<a href="#">Q4R657</a>
Reactivity	Human
Predicted	Monkey
Host	Rabbit
Clonality	Polyclonal
Isotype	Rabbit IgG
Calculated MW	68832
Antigen Region	367-396

**TAF1B Antibody (Center) - Additional Information**

**Gene ID** 9014

**Other Names**

TATA box-binding protein-associated factor RNA polymerase I subunit B, RNA polymerase I-specific TBP-associated factor 63 kDa, TAFI63, TATA box-binding protein-associated factor 1B, TBP-associated factor 1B, Transcription initiation factor SL1/TIF-IB subunit B, TAF1B

**Target/Specificity**

This TAF1B antibody is generated from rabbits immunized with a KLH conjugated synthetic peptide between 367-396 amino acids from the Central region of human TAF1B.

**Dilution**

WB~~1:1000

E~~Use at an assay dependent concentration.

**Format**

Purified polyclonal antibody supplied in PBS with 0.09% (W/V) sodium azide. This antibody is purified through a protein A column, followed by peptide affinity purification.

**Storage**

Maintain refrigerated at 2-8°C for up to 2 weeks. For long term storage store at -20°C in small aliquots to prevent freeze-thaw cycles.

**Precautions**

TAF1B Antibody (Center) is for research use only and not for use in diagnostic or therapeutic procedures.

**TAF1B Antibody (Center) - Protein Information**

**Name** TAF1B

**Function** Component of RNA polymerase I core factor complex that acts as a GTF2B/TFIIB-like factor and plays a key role in multiple steps during transcription initiation such as pre-initiation complex (PIC) assembly and postpolymerase recruitment events in polymerase I (Pol I) transcription. Binds rDNA promoters and plays a role in Pol I recruitment as a component of the SL1/TIF-IB complex and, possibly, directly through its interaction with RRN3.

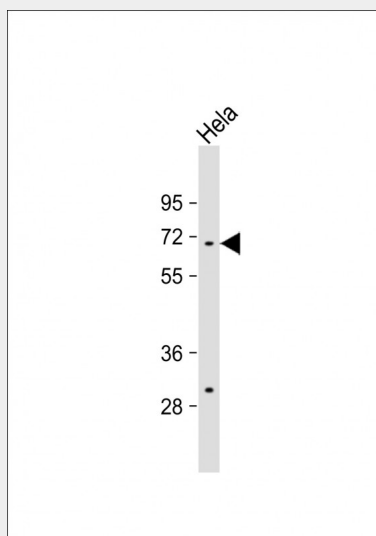
**Cellular Location**

Nucleus, nucleolus

**TAF1B Antibody (Center) - Protocols**

Provided below are standard protocols that you may find useful for product applications.

- [Western Blot](#)
- [Blocking Peptides](#)
- [Dot Blot](#)
- [Immunohistochemistry](#)
- [Immunofluorescence](#)
- [Immunoprecipitation](#)
- [Flow Cytometry](#)
- [Cell Culture](#)

**TAF1B Antibody (Center) - Images**

Anti-TAF1B Antibody (Center) at 1:1000 dilution + HeLa whole cell lysate Lysates/proteins at 20 µg per lane. Secondary Goat Anti-Rabbit IgG, (H+L), Peroxidase conjugated at 1/10000 dilution. Predicted band size : 69 kDa Blocking/Dilution buffer: 5% NFDm/TBST.

**TAF1B Antibody (Center) - Background**

Component of RNA polymerase I core factor complex that acts as a GTF2B/TFIIB-like factor and plays a key role in multiple steps during transcription initiation such as preinitiation complex (PIC) assembly and postpolymerase recruitment events in polymerase I (Pol I) transcription. Binds rDNA promoters and plays a role in Pol I recruitment as a component of the SL1/TIF-IB complex and, possibly, directly through its interaction with RRN3.