

SGCE Antibody (C-term)
Affinity Purified Rabbit Polyclonal Antibody (Pab)
Catalog # AP20299b

Specification

SGCE Antibody (C-term) - Product Information

Application	WB,E
Primary Accession	O43556
Other Accession	Q6YAT4 , Q70258 , Q4R5B1 , Q29S03
Reactivity	Human
Predicted	Bovine, Monkey, Mouse, Rat
Host	Rabbit
Clonality	Polyclonal
Isotype	Rabbit IgG
Calculated MW	49851
Antigen Region	351-379

SGCE Antibody (C-term) - Additional Information

Gene ID 8910

Other Names

Epsilon-sarcoglycan, Epsilon-SG, SGCE, ESG

Target/Specificity

This SGCE antibody is generated from rabbits immunized with a KLH conjugated synthetic peptide between 351-379 amino acids from the C-terminal region of human SGCE.

Dilution

WB~~1:1000

E~~Use at an assay dependent concentration.

Format

Purified polyclonal antibody supplied in PBS with 0.09% (W/V) sodium azide. This antibody is purified through a protein A column, followed by peptide affinity purification.

Storage

Maintain refrigerated at 2-8°C for up to 2 weeks. For long term storage store at -20°C in small aliquots to prevent freeze-thaw cycles.

Precautions

SGCE Antibody (C-term) is for research use only and not for use in diagnostic or therapeutic procedures.

SGCE Antibody (C-term) - Protein Information

Name SGCE

Synonyms ESG

Function Component of the sarcoglycan complex, a subcomplex of the dystrophin-glycoprotein complex which forms a link between the F-actin cytoskeleton and the extracellular matrix.

Cellular Location

Cell membrane, sarcolemma; Single- pass membrane protein. Cytoplasm, cytoskeleton. Cell projection, dendrite. Golgi apparatus

Tissue Location

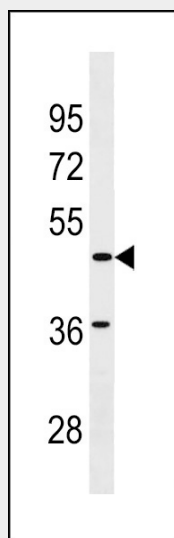
Ubiquitous.

SGCE Antibody (C-term) - Protocols

Provided below are standard protocols that you may find useful for product applications.

- [Western Blot](#)
- [Blocking Peptides](#)
- [Dot Blot](#)
- [Immunohistochemistry](#)
- [Immunofluorescence](#)
- [Immunoprecipitation](#)
- [Flow Cytometry](#)
- [Cell Culture](#)

SGCE Antibody (C-term) - Images



SGCE Antibody (C-term) (Cat. #AP20299b) western blot analysis in A2058 cell line lysates (35ug/lane). This demonstrates the SGCE antibody detected the SGCE protein (arrow).

SGCE Antibody (C-term) - Background

Component of the sarcoglycan complex, a subcomplex of the dystrophin-glycoprotein complex which forms a link between the F-actin cytoskeleton and the extracellular matrix.