

**Mouse Znf260 Antibody (N-term)**  
**Affinity Purified Rabbit Polyclonal Antibody (Pab)**  
**Catalog # AP20301a****Specification**

---

**Mouse Znf260 Antibody (N-term) - Product Information**

Application	WB,E
Primary Accession	<a href="#">Q62513</a>
Other Accession	<a href="#">Q62981</a>
Reactivity	Mouse
Predicted	Rat
Host	Rabbit
Clonality	Polyclonal
Isotype	Rabbit IgG
Calculated MW	46443
Antigen Region	89-115

**Mouse Znf260 Antibody (N-term) - Additional Information****Gene ID** 26466**Other Names**

Zinc finger protein 260, Zfp-260, Znf260, Zfp260

**Target/Specificity**

This Mouse Znf260 antibody is generated from rabbits immunized with a KLH conjugated synthetic peptide between 89-115 amino acids from the N-terminal region of mouse Znf260.

**Dilution**

WB~~1:1000

**Format**

Purified polyclonal antibody supplied in PBS with 0.09% (W/V) sodium azide. This antibody is purified through a protein A column, followed by peptide affinity purification.

**Storage**

Maintain refrigerated at 2-8°C for up to 2 weeks. For long term storage store at -20°C in small aliquots to prevent freeze-thaw cycles.

**Precautions**

Mouse Znf260 Antibody (N-term) is for research use only and not for use in diagnostic or therapeutic procedures.

**Mouse Znf260 Antibody (N-term) - Protein Information****Name** Znf260**Synonyms** Zfp260

**Function** Transcription factor that acts as a cardiac regulator and an effector of alpha1-adrenergic signaling. Binds to PE response elements (PERE) present in the promoter of genes such as ANF/NPPA and acts as a direct transcriptional activator of NPPA. Also acts as a cofactor with GATA4, a key cardiac regulator.

#### **Cellular Location**

Nucleus.

#### **Tissue Location**

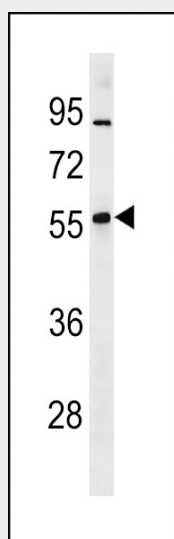
Predominantly present in heart. Outside the heart, it is detected in embryonic and postnatal vascular smooth muscle cells and in epithelial cells of the lung, gut and kidney at sites of epithelial morphogenesis and in the spinal cord (at protein level)

### **Mouse Znf260 Antibody (N-term) - Protocols**

Provided below are standard protocols that you may find useful for product applications.

- [Western Blot](#)
- [Blocking Peptides](#)
- [Dot Blot](#)
- [Immunohistochemistry](#)
- [Immunofluorescence](#)
- [Immunoprecipitation](#)
- [Flow Cytometry](#)
- [Cell Culture](#)

### **Mouse Znf260 Antibody (N-term) - Images**



Mouse Znf260 Antibody (N-term) (Cat. #AP20301a) western blot analysis in mouse lung tissue lysates (35ug/lane). This demonstrates the Mouse Znf260 antibody detected the Mouse Znf260 protein (arrow).

### **Mouse Znf260 Antibody (N-term) - Background**

Transcription factor that acts as a cardiac regulator and an effector of alpha1-adrenergic signaling. Binds to PE response elements (PERE) present in the promoter of genes such as ANF/NPPA and acts as a direct transcriptional activator of NPPA. Also acts as a cofactor with GATA4, a key cardiac

regulator.