

DCLK1 Antibody (C-term)
Affinity Purified Rabbit Polyclonal Antibody (Pab)
Catalog # AP20304b

Specification

DCLK1 Antibody (C-term) - Product Information

Application	WB,E
Primary Accession	O15075
Other Accession	Q9JLM8
Reactivity	Human
Predicted	Mouse
Host	Rabbit
Clonality	Polyclonal
Isotype	Rabbit IgG
Antigen Region	685-712

DCLK1 Antibody (C-term) - Additional Information

Gene ID 9201

Other Names

Serine/threonine-protein kinase DCLK1, Doublecortin domain-containing protein 3A, Doublecortin-like and CAM kinase-like 1, Doublecortin-like kinase 1, DCLK1, DCAMKL1, DCDC3A, KIAA0369

Target/Specificity

This DCLK1 antibody is generated from rabbits immunized with a KLH conjugated synthetic peptide between 685-712 amino acids of human DCLK1.

Dilution

WB~~1:1000

E~~Use at an assay dependent concentration.

Format

Purified polyclonal antibody supplied in PBS with 0.09% (W/V) sodium azide. This antibody is purified through a protein A column, followed by peptide affinity purification.

Storage

Maintain refrigerated at 2-8°C for up to 2 weeks. For long term storage store at -20°C in small aliquots to prevent freeze-thaw cycles.

Precautions

DCLK1 Antibody (C-term) is for research use only and not for use in diagnostic or therapeutic procedures.

DCLK1 Antibody (C-term) - Protein Information

Name DCLK1

Synonyms DCAMKL1, DCDC3A, KIAA0369

Function Probable kinase that may be involved in a calcium-signaling pathway controlling neuronal migration in the developing brain. May also participate in functions of the mature nervous system.

Tissue Location

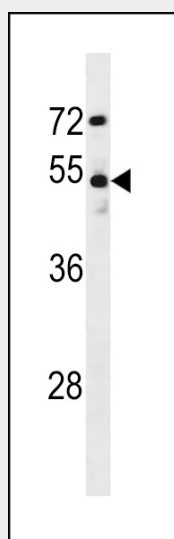
In fetal tissues, highly expressed in brain, detectable in lung and liver, but not in kidney. In adult tissues, expressed ubiquitously in the brain, detectable in the heart, liver, spleen, thymus, prostate, testis, ovary, small intestine and colon. The type A isoforms seem to be expressed predominantly in fetal brain whereas type B isoforms are expressed abundantly in both fetal and adult brain.

DCLK1 Antibody (C-term) - Protocols

Provided below are standard protocols that you may find useful for product applications.

- [Western Blot](#)
- [Blocking Peptides](#)
- [Dot Blot](#)
- [Immunohistochemistry](#)
- [Immunofluorescence](#)
- [Immunoprecipitation](#)
- [Flow Cytometry](#)
- [Cell Culture](#)

DCLK1 Antibody (C-term) - Images



DCLK1 Antibody (C-term) (Cat. #AP20304b) western blot analysis in MDA-MB231 cell line lysates (35ug/lane). This demonstrates the DCLK1 antibody detected the DCLK1 protein (arrow).

DCLK1 Antibody (C-term) - Background

Probable kinase that may be involved in a calcium-signaling pathway controlling neuronal migration in the developing brain. May also participate in functions of the mature nervous system.