

**SAPS2 Antibody (Center)**  
**Affinity Purified Rabbit Polyclonal Antibody (Pab)**  
**Catalog # AP20308c****Specification**

---

**SAPS2 Antibody (Center) - Product Information**

Application	WB,E
Primary Accession	<a href="#">O75170</a>
Other Accession	<a href="#">Q8R3Q2</a>
Reactivity	Human
Predicted	Mouse
Host	Rabbit
Clonality	Polyclonal
Isotype	Rabbit IgG
Calculated MW	104942
Antigen Region	565-593

**SAPS2 Antibody (Center) - Additional Information****Gene ID** 9701**Other Names**

Serine/threonine-protein phosphatase 6 regulatory subunit 2, SAPS domain family member 2, PPP6R2, KIAA0685, PP6R2, SAPS2

**Target/Specificity**

This SAPS2 antibody is generated from rabbits immunized with a KLH conjugated synthetic peptide between 565-593 amino acids from the Central region of human SAPS2.

**Dilution**

WB~~1:1000

E~~Use at an assay dependent concentration.

**Format**

Purified polyclonal antibody supplied in PBS with 0.09% (W/V) sodium azide. This antibody is purified through a protein A column, followed by peptide affinity purification.

**Storage**

Maintain refrigerated at 2-8°C for up to 2 weeks. For long term storage store at -20°C in small aliquots to prevent freeze-thaw cycles.

**Precautions**

SAPS2 Antibody (Center) is for research use only and not for use in diagnostic or therapeutic procedures.

**SAPS2 Antibody (Center) - Protein Information****Name** PPP6R2

**Synonyms** KIAA0685, PP6R2, SAPS2

**Function** Regulatory subunit of protein phosphatase 6 (PP6). May function as a scaffolding PP6 subunit. Involved in the PP6-mediated dephosphorylation of NFKBIE opposing its degradation in response to TNF-alpha.

**Cellular Location**

Cytoplasm.

**Tissue Location**

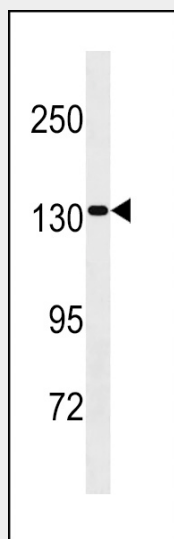
Ubiquitously expressed with strongest expression in the testis followed by liver, heart, kidney, brain and placenta

### SAPS2 Antibody (Center) - Protocols

Provided below are standard protocols that you may find useful for product applications.

- [Western Blot](#)
- [Blocking Peptides](#)
- [Dot Blot](#)
- [Immunohistochemistry](#)
- [Immunofluorescence](#)
- [Immunoprecipitation](#)
- [Flow Cytometry](#)
- [Cell Culture](#)

### SAPS2 Antibody (Center) - Images



SAPS2 Antibody (Center) (Cat. #AP20308c) western blot analysis in HepG2 cell line lysates (35ug/lane). This demonstrates the SAPS2 antibody detected the SAPS2 protein (arrow).

### SAPS2 Antibody (Center) - Background

Regulatory subunit of protein phosphatase 6 (PP6). May function as a scaffolding PP6 subunit. Involved in the PP6-mediated dephosphorylation of NFKBIE opposing its degradation in response to TNF-alpha.