

RFPL3 Antibody (N-term)
Affinity Purified Rabbit Polyclonal Antibody (Pab)
Catalog # AP20312a**Specification**

RFPL3 Antibody (N-term) - Product Information

Application	WB,E
Primary Accession	075679
Reactivity	Human
Host	Rabbit
Clonality	Polyclonal
Isotype	Rabbit IgG
Calculated MW	35386
Antigen Region	70-98

RFPL3 Antibody (N-term) - Additional Information**Gene ID** 10738**Other Names**

Ret finger protein-like 3, RFPL3

Target/Specificity

This RFPL3 antibody is generated from rabbits immunized with a KLH conjugated synthetic peptide between 70-98 amino acids from the N-terminal region of human RFPL3.

Dilution

WB~~1:1000

E~~Use at an assay dependent concentration.

Format

Purified polyclonal antibody supplied in PBS with 0.09% (W/V) sodium azide. This antibody is purified through a protein A column, followed by peptide affinity purification.

Storage

Maintain refrigerated at 2-8°C for up to 2 weeks. For long term storage store at -20°C in small aliquots to prevent freeze-thaw cycles.

Precautions

RFPL3 Antibody (N-term) is for research use only and not for use in diagnostic or therapeutic procedures.

RFPL3 Antibody (N-term) - Protein Information**Name** RFPL3

Function (Microbial infection) Stimulates the activity of Human Immunodeficiency Virus 1/HIV-1 pre-integration complex.

Cellular Location

Cytoplasm. Nucleus. Note=A higher concentration of RFPL3 is observed in the cytoplasm compared to the nucleus

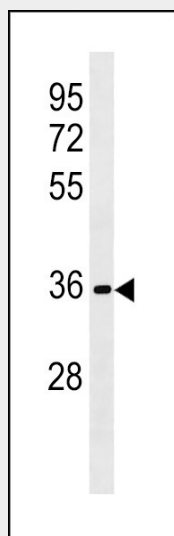
Tissue Location

Expressed during neurogenesis in differentiating human embryonic stem cells and in the developing human neocortex

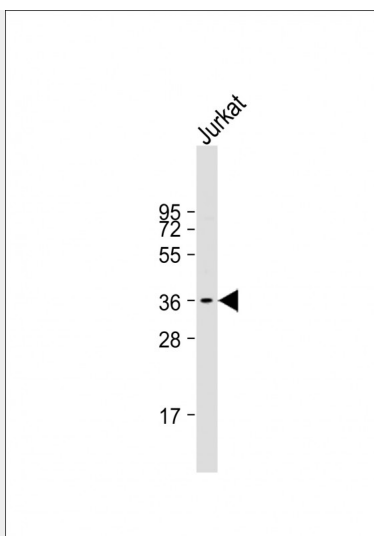
RFPL3 Antibody (N-term) - Protocols

Provided below are standard protocols that you may find useful for product applications.

- [Western Blot](#)
- [Blocking Peptides](#)
- [Dot Blot](#)
- [Immunohistochemistry](#)
- [Immunofluorescence](#)
- [Immunoprecipitation](#)
- [Flow Cytometry](#)
- [Cell Culture](#)

RFPL3 Antibody (N-term) - Images

RFPL3 Antibody (N-term) (Cat. #AP20312a) western blot analysis in HL-60 cell line lysates (35ug/lane). This demonstrates the RFPL3 antibody detected the RFPL3 protein (arrow).



Anti-RFPL3 Antibody (N-term) at 1:1000 dilution + Jurkat whole cell lysate Lysates/proteins at 20 µg per lane. Secondary Goat Anti-Rabbit IgG, (H+L), Peroxidase conjugated at 1/10000 dilution. Predicted band size : 35 kDa Blocking/Dilution buffer: 5% NFDM/TBST.

RFPL3 Antibody (N-term) - Background

The function of this protein remains unknown. RFPL3 protein is encoded by 2 exons and is 91 to 94% identical to RFPL1 and RFPL2. Exon 1 of RFPL3 encodes a putative RING-like motif, and exon 2 encodes a B30-2 domain. Seroussi et al. (1999) proposed that RFPL3 arose from an intrachromosomal duplication.