

ASB11 Antibody (N-term)
Affinity Purified Rabbit Polyclonal Antibody (Pab)
Catalog # AP20314a**Specification**

ASB11 Antibody (N-term) - Product Information

Application	WB,E
Primary Accession	Q8WXH4
Other Accession	Q9CQ31 , Q3SZE4
Reactivity	Human
Predicted	Bovine, Mouse
Host	Rabbit
Clonality	Polyclonal
Isotype	Rabbit IgG
Calculated MW	35367
Antigen Region	26-54

ASB11 Antibody (N-term) - Additional Information**Gene ID** 140456**Other Names**

Ankyrin repeat and SOCS box protein 11, ASB-11, ASB11

Target/Specificity

This ASB11 antibody is generated from rabbits immunized with a KLH conjugated synthetic peptide between 26-54 amino acids from the N-terminal region of human ASB11.

Dilution

WB~~1:1000

E~~Use at an assay dependent concentration.

Format

Purified polyclonal antibody supplied in PBS with 0.09% (W/V) sodium azide. This antibody is purified through a protein A column, followed by peptide affinity purification.

Storage

Maintain refrigerated at 2-8°C for up to 2 weeks. For long term storage store at -20°C in small aliquots to prevent freeze-thaw cycles.

Precautions

ASB11 Antibody (N-term) is for research use only and not for use in diagnostic or therapeutic procedures.

ASB11 Antibody (N-term) - Protein Information**Name** ASB11 {ECO:0000303|PubMed:24337577, ECO:0000312|HGNC:HGNC:17186}

Function Substrate-recognition component of a cullin-5-RING E3 ubiquitin-protein ligase complex (ECS complex, also named CRL5 complex), which mediates the ubiquitination and subsequent proteasomal degradation of target proteins, such as BIK, DIRAS2 and RPN1 (PubMed:[24337577](#), PubMed:[31387940](#), PubMed:[38574733](#)). The ECS(ASB11) complex acts as a regulator of the endoplasmic reticulum unfolded protein response by mediating ubiquitination and degradation of BIK (PubMed:[31387940](#)).

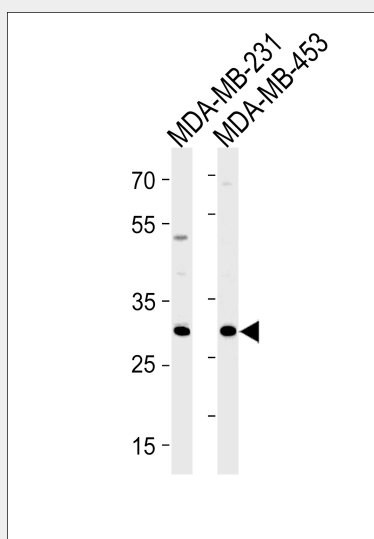
Cellular Location
Endoplasmic reticulum

ASB11 Antibody (N-term) - Protocols

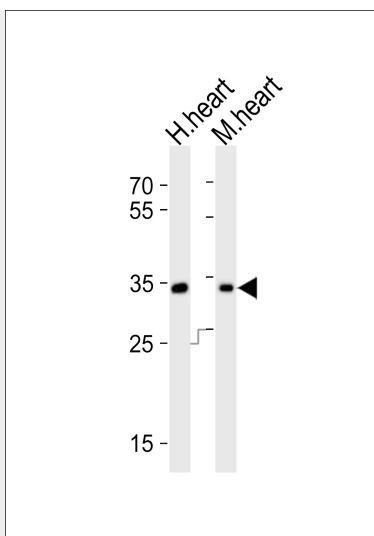
Provided below are standard protocols that you may find useful for product applications.

- [Western Blot](#)
- [Blocking Peptides](#)
- [Dot Blot](#)
- [Immunohistochemistry](#)
- [Immunofluorescence](#)
- [Immunoprecipitation](#)
- [Flow Cytometry](#)
- [Cell Culture](#)

ASB11 Antibody (N-term) - Images



ASB11 Antibody (N-term) (Cat.# AP20314a) western blot analysis in MDA-MB-231,MDA-MB-453 cell line lysates (35ug/lane).This demonstrates the ASB11 antibody detected the ASB11 protein (arrow).



Western blot analysis of lysates from human heart, mouse heart tissue (from left to right), using ASB11 Antibody (N-term)(Cat. #AP20314a). AP20314a was diluted at 1:1000 at each lane. A goat anti-rabbit IgG H&L(HRP) at 1:10000 dilution was used as the secondary antibody. Lysates at 20ug per lane.

ASB11 Antibody (N-term) - Background

May be a substrate-recognition component of a SCF-like ECS (Elongin-Cullin-SOCS-box protein) E3 ubiquitin-protein ligase complex which mediates the ubiquitination and subsequent proteasomal degradation of target proteins (By similarity).