

**ZCCHC3 Antibody (Center)**  
**Affinity Purified Rabbit Polyclonal Antibody (Pab)**  
**Catalog # AP20315c****Specification**

---

**ZCCHC3 Antibody (Center) - Product Information**

Application	WB,E
Primary Accession	<a href="#">O9NUD5</a>
Reactivity	Human
Host	Rabbit
Clonality	Polyclonal
Isotype	Rabbit IgG
Calculated MW	43547
Antigen Region	210-238

**ZCCHC3 Antibody (Center) - Additional Information****Gene ID** 85364**Other Names**

Zinc finger CCHC domain-containing protein 3, ZCCHC3, C20orf99

**Target/Specificity**

This ZCCHC3 antibody is generated from rabbits immunized with a KLH conjugated synthetic peptide between 210-238 amino acids from the Central region of human ZCCHC3.

**Dilution**

WB~~1:1000

E~~Use at an assay dependent concentration.

**Format**

Purified polyclonal antibody supplied in PBS with 0.09% (W/V) sodium azide. This antibody is purified through a protein A column, followed by peptide affinity purification.

**Storage**

Maintain refrigerated at 2-8°C for up to 2 weeks. For long term storage store at -20°C in small aliquots to prevent freeze-thaw cycles.

**Precautions**

ZCCHC3 Antibody (Center) is for research use only and not for use in diagnostic or therapeutic procedures.

**ZCCHC3 Antibody (Center) - Protein Information****Name** ZCCHC3 ([HGNC:16230](#))

**Function** Nucleic acid-binding protein involved in innate immune response to DNA and RNA viruses (PubMed:[30135424](#), PubMed:[30193849](#)). Binds DNA and RNA in the cytoplasm and acts by

promoting recognition of viral nucleic acids by virus sensors, such as RIGI, IFIH1/MDA5 and CGAS (PubMed:[30135424](#), PubMed:[30193849](#)). Acts as a co-sensor for recognition of double-stranded DNA (dsDNA) by cGAS in the cytoplasm, thereby playing a role in innate immune response to cytosolic dsDNA and DNA virus (PubMed:[30135424](#)). Binds dsDNA and probably acts by promoting sensing of dsDNA by CGAS, leading to enhance CGAS oligomerization and activation (PubMed:[30135424](#)). Promotes sensing of viral RNA by RIGI- like receptors proteins RIGI and IFIH1/MDA5 via two mechanisms: binds double-stranded RNA (dsRNA), enhancing the binding of RIGI and IFIH1/MDA5 to dsRNA and promotes 'Lys-63'-linked ubiquitination and subsequent activation of RIGI and IFIH1/MDA5 (PubMed:[30193849](#)).

#### Cellular Location

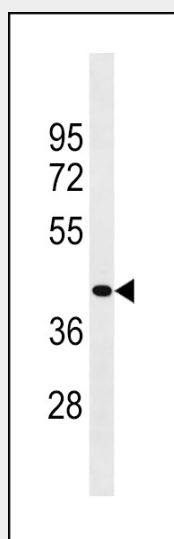
Cytoplasm.

### ZCCHC3 Antibody (Center) - Protocols

Provided below are standard protocols that you may find useful for product applications.

- [Western Blot](#)
- [Blocking Peptides](#)
- [Dot Blot](#)
- [Immunohistochemistry](#)
- [Immunofluorescence](#)
- [Immunoprecipitation](#)
- [Flow Cytometry](#)
- [Cell Culture](#)

### ZCCHC3 Antibody (Center) - Images



ZCCHC3 Antibody (Center) (Cat. #AP20315c) western blot analysis in HepG2 cell line lysates (35ug/lane). This demonstrates the ZCCHC3 antibody detected the ZCCHC3 protein (arrow).

### ZCCHC3 Antibody (Center) - Background

ZCCHC3 is a zinc-finger protein containing 3 CCHC-type zinc fingers.