

SLCO6A1 Antibody (C-term)
Affinity Purified Rabbit Polyclonal Antibody (Pab)
Catalog # AP20316b

Specification

SLCO6A1 Antibody (C-term) - Product Information

Application	WB,E
Primary Accession	Q86UG4
Reactivity	Human
Host	Rabbit
Clonality	Polyclonal
Isotype	Rabbit IgG
Calculated MW	79232
Antigen Region	678-707

SLCO6A1 Antibody (C-term) - Additional Information

Gene ID 133482

Other Names

Solute carrier organic anion transporter family member 6A1, Cancer/testis antigen 48, CT48, Gonad-specific transporter, GST, Organic anion-transporting polypeptide 6A1, Organic anion-transporting polypeptide I, OATP-I, Solute carrier family 21 member 19, SLCO6A1, OATP6A1, SLC21A19

Target/Specificity

This SLCO6A1 antibody is generated from rabbits immunized with a KLH conjugated synthetic peptide between 678-707 amino acids from the C-terminal region of human SLCO6A1.

Dilution

WB~~1:1000

E~~Use at an assay dependent concentration.

Format

Purified polyclonal antibody supplied in PBS with 0.09% (W/V) sodium azide. This antibody is purified through a protein A column, followed by peptide affinity purification.

Storage

Maintain refrigerated at 2-8°C for up to 2 weeks. For long term storage store at -20°C in small aliquots to prevent freeze-thaw cycles.

Precautions

SLCO6A1 Antibody (C-term) is for research use only and not for use in diagnostic or therapeutic procedures.

SLCO6A1 Antibody (C-term) - Protein Information

Name SLCO6A1

Synonyms OATP6A1, SLC21A19

Cellular Location

Cell membrane; Multi-pass membrane protein.

Tissue Location

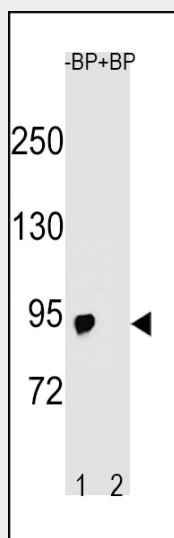
Strongly expressed in testis. Weakly expressed in spleen, brain, fetal brain and placenta. Detected in lung tumors

SLCO6A1 Antibody (C-term) - Protocols

Provided below are standard protocols that you may find useful for product applications.

- [Western Blot](#)
- [Blocking Peptides](#)
- [Dot Blot](#)
- [Immunohistochemistry](#)
- [Immunofluorescence](#)
- [Immunoprecipitation](#)
- [Flow Cytometry](#)
- [Cell Culture](#)

SLCO6A1 Antibody (C-term) - Images



Western blot analysis of SLCO6A1 Antibody (C-term) Pab (Cat. #AP20316b) pre-incubated without(lane 1) and with(lane 2) blocking peptide in A2058 cell line lysate. SLCO6A1 Antibody (C-term) (arrow) was detected using the purified Pab.

SLCO6A1 Antibody (C-term) - Background

The function of SLCO6A1 (solute carrier organic anion transporter family, member 6A1) is currently unknown.