

**SLC28A1 Antibody (Center)**  
**Affinity Purified Rabbit Polyclonal Antibody (Pab)**  
**Catalog # AP20317c**

**Specification**

---

**SLC28A1 Antibody (Center) - Product Information**

Application	WB,E
Primary Accession	<a href="#">O00337</a>
Other Accession	<a href="#">O62667</a>
Reactivity	Human
Predicted	Pig
Host	Rabbit
Clonality	Polyclonal
Isotype	Rabbit IgG
Calculated MW	71584
Antigen Region	381-409

**SLC28A1 Antibody (Center) - Additional Information**

**Gene ID** 9154

**Other Names**

Sodium/nucleoside cotransporter 1, Concentrative nucleoside transporter 1, CNT 1, hCNT1, Na(+)/nucleoside cotransporter 1, Sodium-coupled nucleoside transporter 1, Solute carrier family 28 member 1, SLC28A1, CNT1

**Target/Specificity**

This SLC28A1 antibody is generated from rabbits immunized with a KLH conjugated synthetic peptide between 381-409 amino acids from the Central region of human SLC28A1.

**Dilution**

WB~~1:2000

E~~Use at an assay dependent concentration.

**Format**

Purified polyclonal antibody supplied in PBS with 0.09% (W/V) sodium azide. This antibody is purified through a protein A column, followed by peptide affinity purification.

**Storage**

Maintain refrigerated at 2-8°C for up to 2 weeks. For long term storage store at -20°C in small aliquots to prevent freeze-thaw cycles.

**Precautions**

SLC28A1 Antibody (Center) is for research use only and not for use in diagnostic or therapeutic procedures.

**SLC28A1 Antibody (Center) - Protein Information**

**Name** SLC28A1 ([HGNC:11001](#))

**Function** Sodium and pyrimidine nucleoside symporter of the plasma membrane that imports uridine, thymidine and cytidine into cells by coupling their transport to the transmembrane sodium electrochemical gradient. Also transports adenosine, an atypical substrate transported with high apparent affinity, but low maximum velocity. Therefore, exhibits the transport characteristics of the nucleoside transport system cit or N2 subtype (N2/cit) (PubMed:[10455109](#), PubMed:[14701834](#), PubMed:[15194733](#), PubMed:[21795683](#), PubMed:[21998139](#), PubMed:[30658162](#), PubMed:[32126230](#), PubMed:[9124315](#)). Involved in renal nucleoside (re)absorption (PubMed:[30658162](#)).

**Cellular Location**

Cell membrane; Multi-pass membrane protein {ECO:0000250|UniProtKB:Q62674}. Apical cell membrane; Multi-pass membrane protein {ECO:0000250|UniProtKB:Q62674}

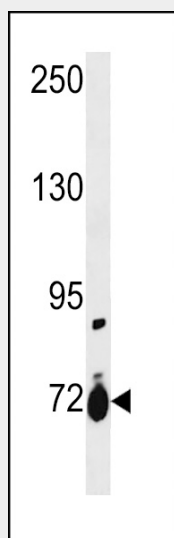
**Tissue Location**

Expressed in kidney..

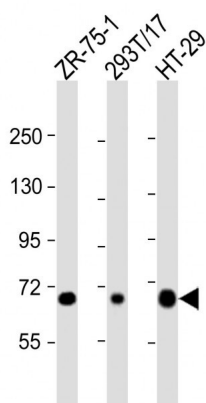
**SLC28A1 Antibody (Center) - Protocols**

Provided below are standard protocols that you may find useful for product applications.

- [Western Blot](#)
- [Blocking Peptides](#)
- [Dot Blot](#)
- [Immunohistochemistry](#)
- [Immunofluorescence](#)
- [Immunoprecipitation](#)
- [Flow Cytometry](#)
- [Cell Culture](#)

**SLC28A1 Antibody (Center) - Images**

SLC28A1 Antibody (Center) (Cat. #AP20317c) western blot analysis in ZR-75-1 cell line lysates (35ug/lane). This demonstrates the SLC28A1 antibody detected the SLC28A1 protein (arrow).



All lanes : Anti-SLC28A1 Antibody (Center) at 1:2000 dilution Lane 1: ZR-75-1 whole cell lysate  
Lane 2: 293T/17 whole cell lysate Lane 3: HT-29 whole cell lysate Lysates/proteins at 20 µg per lane. Secondary Goat Anti-Rabbit IgG, (H+L), Peroxidase conjugated at 1/10000 dilution. Predicted band size : 72 kDa Blocking/Dilution buffer: 5% NFDM/TBST.

#### **SLC28A1 Antibody (Center) - Background**

Sodium-dependent and pyrimidine-selective. Exhibits the transport characteristics of the nucleoside transport system cit or N2 subtype (N2/cit) (selective for pyrimidine nucleosides and adenosine). It also transports the antiviral pyrimidine nucleoside analogs 3'-azido-3'-deoxythymidine (AZT) and 2',3'-dideoxycytidine (ddC). It may be involved in the intestinal absorption and renal handling of pyrimidine nucleoside analogs used to treat acquired immunodeficiency syndrome (AIDS). It has the following selective inhibition: adenosine, thymidine, cytidine, uridine >> guanosine, inosine.