

Bcl-2 Antibody (Center Ser70)
Affinity Purified Rabbit Polyclonal Antibody (Pab)
Catalog # AP20322c**Specification**

Bcl-2 Antibody (Center Ser70) - Product Information

Application	WB,E
Primary Accession	P10415
Reactivity	Human
Host	Rabbit
Clonality	Polyclonal
Isotype	Rabbit IgG
Calculated MW	26266
Antigen Region	49-76

Bcl-2 Antibody (Center Ser70) - Additional Information**Gene ID** 596**Other Names**

Apoptosis regulator Bcl-2, BCL2

Target/Specificity

This Bcl-2 antibody is generated from rabbits immunized with a KLH conjugated synthetic peptide between 49-76 amino acids from the Central region of human Bcl-2.

Dilution

WB~~1:1000

E~~Use at an assay dependent concentration.

Format

Purified polyclonal antibody supplied in PBS with 0.09% (W/V) sodium azide. This antibody is purified through a protein A column, followed by peptide affinity purification.

Storage

Maintain refrigerated at 2-8°C for up to 2 weeks. For long term storage store at -20°C in small aliquots to prevent freeze-thaw cycles.

Precautions

Bcl-2 Antibody (Center Ser70) is for research use only and not for use in diagnostic or therapeutic procedures.

Bcl-2 Antibody (Center Ser70) - Protein Information**Name** BCL2

Function Suppresses apoptosis in a variety of cell systems including factor-dependent lymphohematopoietic and neural cells (PubMed:[1508712](#), PubMed:[8183370](#)). Regulates cell death

by controlling the mitochondrial membrane permeability (PubMed:[11368354](#)). Appears to function in a feedback loop system with caspases (PubMed:[11368354](#)). Inhibits caspase activity either by preventing the release of cytochrome c from the mitochondria and/or by binding to the apoptosis-activating factor (APAF-1) (PubMed:[11368354](#)). Also acts as an inhibitor of autophagy: interacts with BECN1 and AMBRA1 during non-starvation conditions and inhibits their autophagy function (PubMed:[18570871](#), PubMed:[20889974](#), PubMed:[21358617](#)). May attenuate inflammation by impairing NLRP1- inflammasome activation, hence CASP1 activation and IL1B release (PubMed:[17418785](#)).

Cellular Location

Mitochondrion outer membrane; Single-pass membrane protein. Nucleus membrane; Single-pass membrane protein. Endoplasmic reticulum membrane; Single-pass membrane protein. Cytoplasm {ECO:0000250|UniProtKB:P10417}

Tissue Location

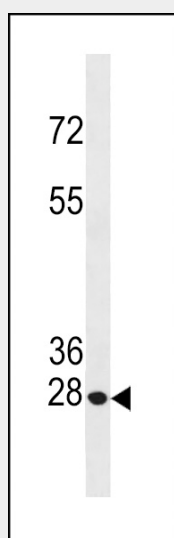
Expressed in a variety of tissues.

Bcl-2 Antibody (Center Ser70) - Protocols

Provided below are standard protocols that you may find useful for product applications.

- [Western Blot](#)
- [Blocking Peptides](#)
- [Dot Blot](#)
- [Immunohistochemistry](#)
- [Immunofluorescence](#)
- [Immunoprecipitation](#)
- [Flow Cytometry](#)
- [Cell Culture](#)

Bcl-2 Antibody (Center Ser70) - Images



Bcl-2 Antibody (Center Ser70) (Cat. #AP20322c) western blot analysis in HeLa cell line lysates (35ug/lane). This demonstrates the Bcl-2 (Ser70) antibody detected the Bcl-2 (Ser70) protein (arrow).

Bcl-2 Antibody (Center Ser70) - Background

Suppresses apoptosis in a variety of cell systems including factor-dependent lymphohematopoietic and neural cells. Regulates cell death by controlling the mitochondrial membrane permeability. Appears to function in a feedback loop system with caspases. Inhibits caspase activity either by preventing the release of cytochrome c from the mitochondria and/or by binding to the apoptosis-activating factor (APAF-1).

Bcl-2 Antibody (Center Ser70) - Citations

- [The Role of MiR-5094 as a Proliferation Suppressor during Cellular Radiation Response via Downregulating STAT5b](#)