

Mouse Mast1 Antibody (C-term)
Affinity Purified Rabbit Polyclonal Antibody (Pab)
Catalog # AP20323b

Specification

Mouse Mast1 Antibody (C-term) - Product Information

Application	WB,E
Primary Accession	O9R1L5
Other Accession	O810W7
Reactivity	Mouse
Predicted	Rat
Host	Rabbit
Clonality	Polyclonal
Isotype	Rabbit IgG
Calculated MW	170997
Antigen Region	1438-1464

Mouse Mast1 Antibody (C-term) - Additional Information

Gene ID 56527

Other Names

Microtubule-associated serine/threonine-protein kinase 1, Syntrophin-associated serine/threonine-protein kinase, Mast1 {ECO:0000312|MGI:MGI:1861901}

Target/Specificity

This Mouse Mast1 antibody is generated from rabbits immunized with a KLH conjugated synthetic peptide between 1438-1464 amino acids from the C-terminal region of mouse Mast1.

Dilution

WB~~1:1000

E~~Use at an assay dependent concentration.

Format

Purified polyclonal antibody supplied in PBS with 0.09% (W/V) sodium azide. This antibody is purified through a protein A column, followed by peptide affinity purification.

Storage

Maintain refrigerated at 2-8°C for up to 2 weeks. For long term storage store at -20°C in small aliquots to prevent freeze-thaw cycles.

Precautions

Mouse Mast1 Antibody (C-term) is for research use only and not for use in diagnostic or therapeutic procedures.

Mouse Mast1 Antibody (C-term) - Protein Information

Name Mast1 {ECO:0000312|MGI:MGI:1861901}

Function Microtubule-associated protein essential for correct brain development (PubMed:[30449657](#)). Appears to link the dystrophin/utrophin network with microtubule filaments via the syntrophins. Phosphorylation of DMD or UTRN may modulate their affinities for associated proteins.

Cellular Location

Cell membrane; Peripheral membrane protein; Cytoplasmic side. Cytoplasm, cytoskeleton. Cell projection, axon. Cell projection, dendrite. Note=Also localized in the soma of neurons (PubMed:30449657). Observed as punctate clusters in the processes of interneurons and along the cell body periphery Colocalizes with syntrophins at the cell membrane

Tissue Location

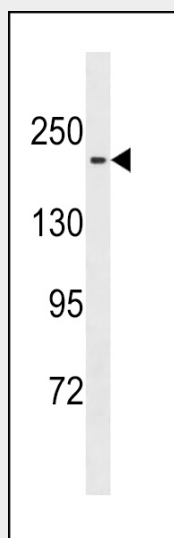
Expressed in the brain (PubMed:30449657). Expressed in the developing cortical plate, the intermediate zone and corpus callosal fibers that cross the midline (PubMed:30449657). Detected at low levels in the testis, liver and spleen (PubMed:30449657). Expressed in proximity to neuronal nuclei throughout the cortex and cerebellum, and in the vascular endothelium. Also detected in ependymal cells, the choroid plexus, and in developing spermatid acrosomes

Mouse Mast1 Antibody (C-term) - Protocols

Provided below are standard protocols that you may find useful for product applications.

- [Western Blot](#)
- [Blocking Peptides](#)
- [Dot Blot](#)
- [Immunohistochemistry](#)
- [Immunofluorescence](#)
- [Immunoprecipitation](#)
- [Flow Cytometry](#)
- [Cell Culture](#)

Mouse Mast1 Antibody (C-term) - Images



Mouse Mast1 Antibody (C-term) (Cat. #AP20323b) western blot analysis in mouse spleen tissue lysates (35ug/lane). This demonstrates the Mouse Mast1 antibody detected the Mouse Mast1 protein (arrow).

Mouse Mast1 Antibody (C-term) - Background

Appears to link the dystrophin/utrophin network with microtubule filaments via the syntrophins.
Phosphorylation of DMD or UTRN may modulate their affinities for associated proteins.