

FAM26F Antibody (C-term)
Affinity Purified Rabbit Polyclonal Antibody (Pab)
Catalog # AP20331b**Specification**

FAM26F Antibody (C-term) - Product Information

Application	WB,E
Primary Accession	Q5R3K3
Reactivity	Human
Host	Rabbit
Clonality	Polyclonal
Isotype	Rabbit IgG
Antigen Region	266-295

FAM26F Antibody (C-term) - Additional Information**Gene ID** 441168**Other Names**

Protein FAM26F, FAM26F, C6orf187

Target/Specificity

This FAM26F antibody is generated from rabbits immunized with a KLH conjugated synthetic peptide between 266-295 amino acids from the C-terminal region of human FAM26F.

Dilution

WB~~1:1000

E~~Use at an assay dependent concentration.

Format

Purified polyclonal antibody supplied in PBS with 0.09% (W/V) sodium azide. This antibody is purified through a protein A column, followed by peptide affinity purification.

Storage

Maintain refrigerated at 2-8°C for up to 2 weeks. For long term storage store at -20°C in small aliquots to prevent freeze-thaw cycles.

Precautions

FAM26F Antibody (C-term) is for research use only and not for use in diagnostic or therapeutic procedures.

FAM26F Antibody (C-term) - Protein Information**Name** CALHM6 ([HGNC:33391](#))**Synonyms** C6orf187, FAM26F**Function** Pore-forming subunit of an ATP-permeable channel (By similarity). In response to

pathogen-derived and proinflammatory stimuli, relocates from intracellular compartments to NK-dendritic cell and NK-macrophage immune synapses where it mediates ATP efflux and NK cell activation involved in antimicrobial and antitumor responses (By similarity). May assemble to form gap junction channel-like structures with gating and ion conductance likely regulated by membrane lipids and voltage rather than by extracellular calcium levels (PubMed:[32374262](#)).

Cellular Location

Cell membrane; Multi-pass membrane protein. Note=Recruited at immune synapses in response to pathogen-derived and proinflammatory stimuli {ECO:0000250|UniProtKB:Q8C9E8}

Tissue Location

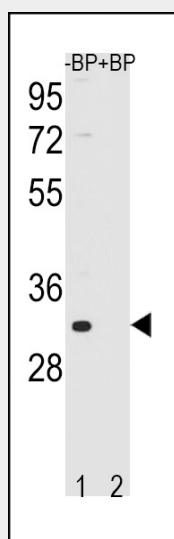
Placenta..

FAM26F Antibody (C-term) - Protocols

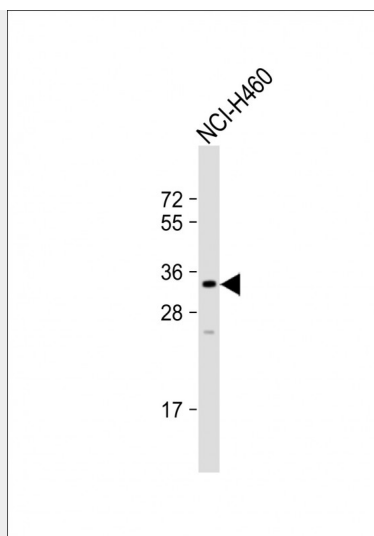
Provided below are standard protocols that you may find useful for product applications.

- [Western Blot](#)
- [Blocking Peptides](#)
- [Dot Blot](#)
- [Immunohistochemistry](#)
- [Immunofluorescence](#)
- [Immunoprecipitation](#)
- [Flow Cytometry](#)
- [Cell Culture](#)

FAM26F Antibody (C-term) - Images



Western blot analysis of FAM26F Antibody (C-term) Pab (Cat. #AP20331b) pre-incubated without(lane 1) and with(lane 2) blocking peptide in NCI-H460 cell line lysate. FAM26F Antibody (C-term) (arrow) was detected using the purified Pab.



Anti-FAM26F Antibody (C-term) at 1:1000 dilution + NCI-H460 whole cell lysate Lysates/proteins at 20 µg per lane. Secondary Goat Anti-Rabbit IgG, (H+L), Peroxidase conjugated at 1/10000 dilution. Predicted band size : 34 kDa Blocking/Dilution buffer: 5% NFDM/TBST.

FAM26F Antibody (C-term) - Background

Belongs to the FAM26 family.