

HLA-DOA Antibody (N-term)
Affinity Purified Rabbit Polyclonal Antibody (Pab)
Catalog # AP20332a**Specification**

HLA-DOA Antibody (N-term) - Product Information

Application	WB,E
Primary Accession	P06340
Reactivity	Human
Host	Rabbit
Clonality	Polyclonal
Isotype	Rabbit IgG
Calculated MW	27599
Antigen Region	31-59

HLA-DOA Antibody (N-term) - Additional Information**Gene ID** 3111**Other Names**

HLA class II histocompatibility antigen, DO alpha chain, MHC DN-alpha, MHC DZ alpha, MHC class II antigen DOA, HLA-DOA, HLA-DNA, HLA-DZA

Target/Specificity

This HLA-DOA antibody is generated from rabbits immunized with a KLH conjugated synthetic peptide between 31-59 amino acids from the N-terminal region of human HLA-DOA.

Dilution

WB~~1:1000

E~~Use at an assay dependent concentration.

Format

Purified polyclonal antibody supplied in PBS with 0.09% (W/V) sodium azide. This antibody is purified through a protein A column, followed by peptide affinity purification.

Storage

Maintain refrigerated at 2-8°C for up to 2 weeks. For long term storage store at -20°C in small aliquots to prevent freeze-thaw cycles.

Precautions

HLA-DOA Antibody (N-term) is for research use only and not for use in diagnostic or therapeutic procedures.

HLA-DOA Antibody (N-term) - Protein Information**Name** HLA-DOA**Synonyms** HLA-DNA, HLA-DZA

Function Important modulator in the HLA class II restricted antigen presentation pathway by interaction with the HLA-DM molecule in B- cells. Modifies peptide exchange activity of HLA-DM.

Cellular Location

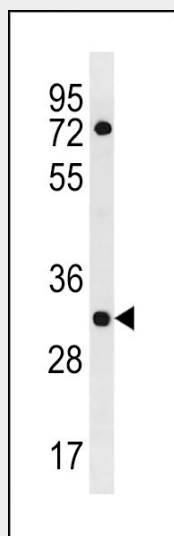
Endosome membrane; Single-pass type I membrane protein. Lysosome membrane; Single-pass type I membrane protein Note=Complexes with HLA-DM molecule during intracellular transport and in endosomal/lysosomal compartments. Heterotetramerization is necessary to exit the ER

HLA-DOA Antibody (N-term) - Protocols

Provided below are standard protocols that you may find useful for product applications.

- [Western Blot](#)
- [Blocking Peptides](#)
- [Dot Blot](#)
- [Immunohistochemistry](#)
- [Immunofluorescence](#)
- [Immunoprecipitation](#)
- [Flow Cytometry](#)
- [Cell Culture](#)

HLA-DOA Antibody (N-term) - Images



HLA-DOA Antibody (N-term) (Cat. #AP20332a) western blot analysis in HL-60 cell line lysates (35ug/lane). This demonstrates the HLA-DOA antibody detected the HLA-DOA protein (arrow).

HLA-DOA Antibody (N-term) - Background

Important modulator in the HLA class II restricted antigen presentation pathway by interaction with the HLA-DM molecule in B-cells. Modifies peptide exchange activity of HLA-DM.