

SGSM1 Antibody (Center)
Affinity Purified Rabbit Polyclonal Antibody (Pab)
Catalog # AP20344c

Specification

SGSM1 Antibody (Center) - Product Information

Application	WB,E
Primary Accession	Q2NKG1
Reactivity	Human
Host	Rabbit
Clonality	Polyclonal
Isotype	Rabbit IgG
Calculated MW	129718
Antigen Region	624-652

SGSM1 Antibody (Center) - Additional Information

Gene ID 129049

Other Names

Small G protein signaling modulator 1, RUN and TBC1 domain-containing protein 2, SGSM1, KIAA1941, RUTBC2

Target/Specificity

This SGSM1 antibody is generated from rabbits immunized with a KLH conjugated synthetic peptide between 624-652 amino acids from the Central region of human SGSM1.

Dilution

WB~~1:1000

E~~Use at an assay dependent concentration.

Format

Purified polyclonal antibody supplied in PBS with 0.09% (W/V) sodium azide. This antibody is purified through a protein A column, followed by peptide affinity purification.

Storage

Maintain refrigerated at 2-8°C for up to 2 weeks. For long term storage store at -20°C in small aliquots to prevent freeze-thaw cycles.

Precautions

SGSM1 Antibody (Center) is for research use only and not for use in diagnostic or therapeutic procedures.

SGSM1 Antibody (Center) - Protein Information

Name SGSM1

Synonyms KIAA1941, RUTBC2

Function Interacts with numerous Rab family members, functioning as Rab effector for some, and as GTPase activator for others. Promotes GTP hydrolysis by RAB34 and RAB36. Probably functions as a GTPase effector with RAB9A and RAB9B; does not stimulate GTP hydrolysis with RAB9A and RAB9B.

Cellular Location

Golgi apparatus, trans-Golgi network {ECO:0000250|UniProtKB:Q8BPQ7}. Cytoplasmic vesicle membrane; Peripheral membrane protein. Cytoplasm Note=Recruited to cytoplasmic vesicle membranes via its interaction with Rab family members, such as RAB9A.

Tissue Location

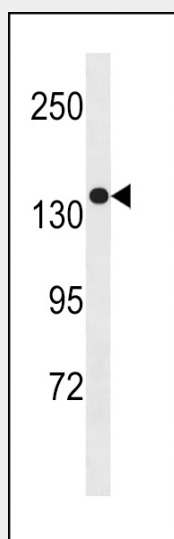
Mainly expressed in brain, heart and testis.

SGSM1 Antibody (Center) - Protocols

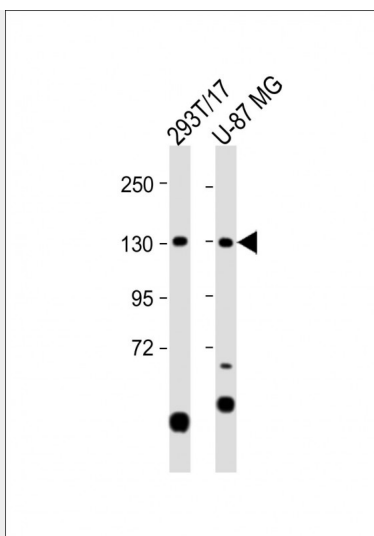
Provided below are standard protocols that you may find useful for product applications.

- [Western Blot](#)
- [Blocking Peptides](#)
- [Dot Blot](#)
- [Immunohistochemistry](#)
- [Immunofluorescence](#)
- [Immunoprecipitation](#)
- [Flow Cytometry](#)
- [Cell Culture](#)

SGSM1 Antibody (Center) - Images



SGSM1 Antibody (Center) (Cat. #AP20344c) western blot analysis in MDA-MB453 cell line lysates (35ug/lane). This demonstrates the SGSM1 antibody detected the SGSM1 protein (arrow).



All lanes : Anti-SGSM1 Antibody (Center) at 1:1000 dilution Lane 1: 293T/17 whole cell lysate
Lane 2: U-87 MG whole cell lysate Lysates/proteins at 20 µg per lane. Secondary Goat Anti-Rabbit
IgG, (H+L), Peroxidase conjugated at 1/10000 dilution. Predicted band size : 130 kDa
Blocking/Dilution buffer: 5% NFDM/TBST.

SGSM1 Antibody (Center) - Background

The function of this protein remains unknown.