

**STK25 Antibody (C-term)**  
**Affinity Purified Rabbit Polyclonal Antibody (Pab)**  
**Catalog # AP20345b**

**Specification**

---

**STK25 Antibody (C-term) - Product Information**

Application	WB,E
Primary Accession	<a href="#">O00506</a>
Other Accession	<a href="#">O9Z2W1</a> , <a href="#">Q3SWY6</a>
Reactivity	Human
Predicted	Bovine, Mouse
Host	Rabbit
Clonality	Polyclonal
Isotype	Rabbit IgG
Calculated MW	48112
Antigen Region	347-375

**STK25 Antibody (C-term) - Additional Information**

**Gene ID** 10494

**Other Names**

Serine/threonine-protein kinase 25, Ste20-like kinase, Sterile 20/oxidant stress-response kinase 1, SOK-1, Ste20/oxidant stress response kinase 1, STK25, SOK1, YSK1

**Target/Specificity**

This STK25 antibody is generated from rabbits immunized with a KLH conjugated synthetic peptide between 347-375 amino acids from the C-terminal region of human STK25.

**Dilution**

WB~~1:1000

E~~Use at an assay dependent concentration.

**Format**

Purified polyclonal antibody supplied in PBS with 0.09% (W/V) sodium azide. This antibody is purified through a protein A column, followed by peptide affinity purification.

**Storage**

Maintain refrigerated at 2-8°C for up to 2 weeks. For long term storage store at -20°C in small aliquots to prevent freeze-thaw cycles.

**Precautions**

STK25 Antibody (C-term) is for research use only and not for use in diagnostic or therapeutic procedures.

**STK25 Antibody (C-term) - Protein Information**

**Name** STK25 ([HGNC:11404](#))

**Synonyms** SOK1, YSK1

**Function** Oxidant stress-activated serine/threonine kinase that may play a role in the response to environmental stress. Targets to the Golgi apparatus where it appears to regulate protein transport events, cell adhesion, and polarity complexes important for cell migration. Part of the striatin-interacting phosphatase and kinase (STRIPAK) complexes. STRIPAK complexes have critical roles in protein (de)phosphorylation and are regulators of multiple signaling pathways including Hippo, MAPK, nuclear receptor and cytoskeleton remodeling. Different types of STRIPAK complexes are involved in a variety of biological processes such as cell growth, differentiation, apoptosis, metabolism and immune regulation (PubMed:[18782753](#)).

**Cellular Location**

Cytoplasm. Golgi apparatus. Note=Localizes to the Golgi apparatus

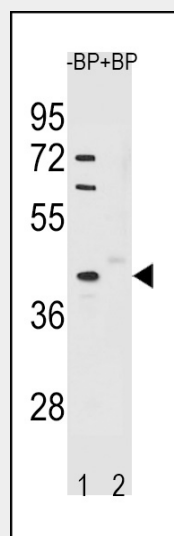
**Tissue Location**

Ubiquitously expressed. Highest levels are found in testis, large intestine, brain and stomach followed by heart and lung

**STK25 Antibody (C-term) - Protocols**

Provided below are standard protocols that you may find useful for product applications.

- [Western Blot](#)
- [Blocking Peptides](#)
- [Dot Blot](#)
- [Immunohistochemistry](#)
- [Immunofluorescence](#)
- [Immunoprecipitation](#)
- [Flow Cytometry](#)
- [Cell Culture](#)

**STK25 Antibody (C-term) - Images**

Western blot analysis of STK25 Antibody (C-term) Pab (Cat. #AP20345b) pre-incubated without (lane 1) and with (lane 2) blocking peptide in A549 cell line lysate. STK25 Antibody (C-term) (arrow) was detected using the purified Pab.

**STK25 Antibody (C-term) - Background**

Oxidant stress-activated serine/threonine kinase that may play a role in the response to environmental stress. Targets to the Golgi apparatus where it appears to regulate protein transport events, cell adhesion, and polarity complexes important for cell migration.