

**APBB2 Antibody (Center)**  
**Affinity Purified Rabbit Polyclonal Antibody (Pab)**  
**Catalog # AP20346c****Specification**

---

**APBB2 Antibody (Center) - Product Information**

|                   |                        |
|-------------------|------------------------|
| Application       | WB,E                   |
| Primary Accession | <a href="#">Q92870</a> |
| Other Accession   | <a href="#">Q9DBR4</a> |
| Reactivity        | Human                  |
| Predicted         | Mouse                  |
| Host              | Rabbit                 |
| Clonality         | Polyclonal             |
| Isotype           | Rabbit IgG             |
| Calculated MW     | 83374                  |
| Antigen Region    | 216-244                |

**APBB2 Antibody (Center) - Additional Information****Gene ID** 323**Other Names**

Amyloid beta A4 precursor protein-binding family B member 2, Protein Fe65-like 1, APBB2, FE65L, FE65L1

**Target/Specificity**

This APBB2 antibody is generated from rabbits immunized with a KLH conjugated synthetic peptide between 216-244 amino acids from the Central region of human APBB2.

**Dilution**

WB~~1:1000

E~~Use at an assay dependent concentration.

**Format**

Purified polyclonal antibody supplied in PBS with 0.09% (W/V) sodium azide. This antibody is purified through a protein A column, followed by peptide affinity purification.

**Storage**

Maintain refrigerated at 2-8°C for up to 2 weeks. For long term storage store at -20°C in small aliquots to prevent freeze-thaw cycles.

**Precautions**

APBB2 Antibody (Center) is for research use only and not for use in diagnostic or therapeutic procedures.

**APBB2 Antibody (Center) - Protein Information****Name** APBB2 ([HGNC:582](#))

**Function** Plays a role in the maintenance of lens transparency, and may also play a role in muscle cell strength (By similarity). Involved in hippocampal neurite branching and neuromuscular junction formation, as a result plays a role in spatial memory functioning (By similarity). Activates transcription of APP (PubMed:[14527950](#)).

**Cellular Location**

Endoplasmic reticulum. Golgi apparatus. Early endosome

**Tissue Location**

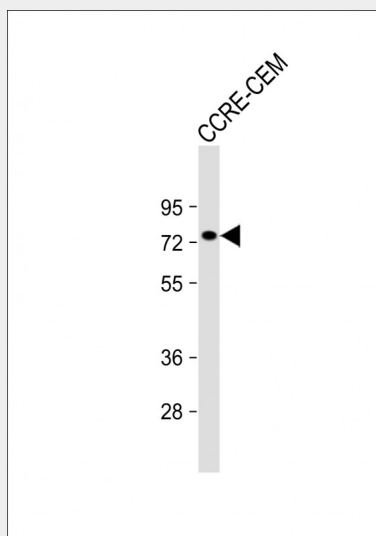
Widely expressed..

**APBB2 Antibody (Center) - Protocols**

Provided below are standard protocols that you may find useful for product applications.

- [Western Blot](#)
- [Blocking Peptides](#)
- [Dot Blot](#)
- [Immunohistochemistry](#)
- [Immunofluorescence](#)
- [Immunoprecipitation](#)
- [Flow Cytometry](#)
- [Cell Culture](#)

**APBB2 Antibody (Center) - Images**



Anti-APBB2 Antibody (Center) at 1:1000 dilution + CCRE-CEM whole cell lysate Lysates/proteins at 20 µg per lane. Secondary Goat Anti-Rabbit IgG, (H+L), Peroxidase conjugated at 1/10000 dilution. Predicted band size : 83 kDa Blocking/Dilution buffer: 5% NFDM/TBST.

**APBB2 Antibody (Center) - Background**

May modulate the internalization of beta-amyloid precursor protein.