

SUZ12 Antibody (C-term)
Affinity Purified Rabbit Polyclonal Antibody (Pab)
Catalog # AP20347b**Specification**

SUZ12 Antibody (C-term) - Product Information

Application	WB,E
Primary Accession	Q15022
Other Accession	Q80U70
Reactivity	Human, Mouse
Predicted	Mouse
Host	Rabbit
Clonality	Polyclonal
Isotype	Rabbit IgG
Antigen Region	559-588

SUZ12 Antibody (C-term) - Additional Information**Gene ID** 23512**Other Names**

Polycomb protein SUZ12, Chromatin precipitated E2F target 9 protein, ChET 9 protein, Joined to JAZF1 protein, Suppressor of zeste 12 protein homolog, SUZ12, CHET9, JAZ1, KIAA0160

Target/Specificity

This SUZ12 antibody is generated from rabbits immunized with a KLH conjugated synthetic peptide between 559-588 amino acids from the C-terminal region of human SUZ12.

Dilution

WB~~1:2000

E~~Use at an assay dependent concentration.

Format

Purified polyclonal antibody supplied in PBS with 0.09% (W/V) sodium azide. This antibody is purified through a protein A column, followed by peptide affinity purification.

Storage

Maintain refrigerated at 2-8°C for up to 2 weeks. For long term storage store at -20°C in small aliquots to prevent freeze-thaw cycles.

Precautions

SUZ12 Antibody (C-term) is for research use only and not for use in diagnostic or therapeutic procedures.

SUZ12 Antibody (C-term) - Protein Information**Name** SUZ12

Synonyms CHET9, JJAZ1, KIAA0160

Function Polycomb group (PcG) protein. Component of the PRC2 complex, which methylates 'Lys-9' (H3K9me) and 'Lys-27' (H3K27me) of histone H3, leading to transcriptional repression of the affected target gene (PubMed:[15225548](#), PubMed:[15231737](#), PubMed:[15385962](#), PubMed:[16618801](#), PubMed:[17344414](#), PubMed:[18285464](#), PubMed:[28229514](#), PubMed:[29499137](#), PubMed:[31959557](#)). The PRC2 complex may also serve as a recruiting platform for DNA methyltransferases, thereby linking two epigenetic repression systems (PubMed:[12351676](#), PubMed:[12435631](#), PubMed:[15099518](#), PubMed:[15225548](#), PubMed:[15385962](#), PubMed:[15684044](#), PubMed:[16431907](#), PubMed:[18086877](#), PubMed:[18285464](#)). Genes repressed by the PRC2 complex include HOXC8, HOXA9, MYT1 and CDKN2A (PubMed:[15231737](#), PubMed:[16618801](#), PubMed:[17200670](#), PubMed:[31959557](#)).

Cellular Location

Nucleus Note=Localizes to chromatin as part of the PRC2 complex

Tissue Location

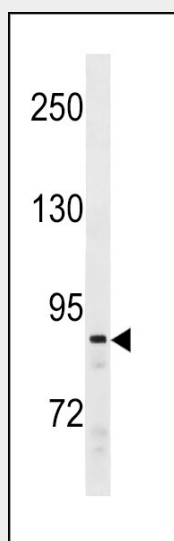
Overexpressed in breast and colon cancer.

SUZ12 Antibody (C-term) - Protocols

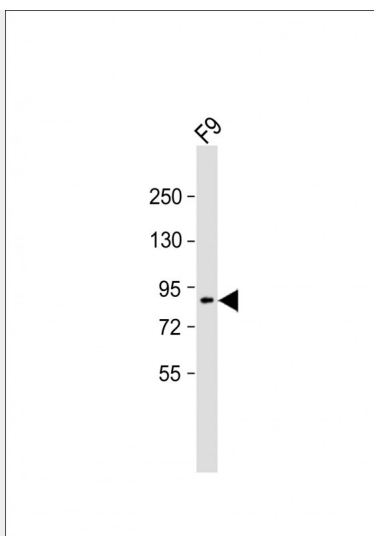
Provided below are standard protocols that you may find useful for product applications.

- [Western Blot](#)
- [Blocking Peptides](#)
- [Dot Blot](#)
- [Immunohistochemistry](#)
- [Immunofluorescence](#)
- [Immunoprecipitation](#)
- [Flow Cytometry](#)
- [Cell Culture](#)

SUZ12 Antibody (C-term) - Images



SUZ12 Antibody (C-term) (Cat. #AP20347b) western blot analysis in Ramos cell line lysates (35ug/lane). This demonstrates the SUZ12 antibody detected the SUZ12 protein (arrow).



Anti-SUZ12 Antibody (C-term) at 1:2000 dilution + F9 whole cell lysate Lysates/proteins at 20 µg per lane. Secondary Goat Anti-Rabbit IgG, (H+L), Peroxidase conjugated at 1/10000 dilution. Predicted band size : 83 kDa Blocking/Dilution buffer: 5% NFDM/TBST.

SUZ12 Antibody (C-term) - Background

Polycomb group (PcG) protein. Component of the PRC2/EED-EZH2 complex, which methylates 'Lys-9' (H3K9me) and 'Lys-27' (H3K27me) of histone H3, leading to transcriptional repression of the affected target gene. The PRC2/EED-EZH2 complex may also serve as a recruiting platform for DNA methyltransferases, thereby linking two epigenetic repression systems. Genes repressed by the PRC2/EED-EZH2 complex include HOXC8, HOXA9, MYT1 and CDKN2A.