

CPVL Antibody (C-term)
Affinity Purified Rabbit Polyclonal Antibody (Pab)
Catalog # AP20351b**Specification**

CPVL Antibody (C-term) - Product Information

Application	WB,E
Primary Accession	Q9H3G5
Reactivity	Human
Host	Rabbit
Clonality	Polyclonal
Isotype	Rabbit IgG
Calculated MW	54164
Antigen Region	448-476

CPVL Antibody (C-term) - Additional Information**Gene ID** 54504**Other Names**

Probable serine carboxypeptidase CPVL, 3416-, Carboxypeptidase, vitellogenic-like, Vitellogenic carboxypeptidase-like protein, VCP-like protein, hVLP, CPVL, VLP

Target/Specificity

This CPVL antibody is generated from rabbits immunized with a KLH conjugated synthetic peptide between 448-476 amino acids from the C-terminal region of human CPVL.

Dilution

WB~~1:1000

Format

Purified polyclonal antibody supplied in PBS with 0.09% (W/V) sodium azide. This antibody is purified through a protein A column, followed by peptide affinity purification.

Storage

Maintain refrigerated at 2-8°C for up to 2 weeks. For long term storage store at -20°C in small aliquots to prevent freeze-thaw cycles.

Precautions

CPVL Antibody (C-term) is for research use only and not for use in diagnostic or therapeutic procedures.

CPVL Antibody (C-term) - Protein Information**Name** CPVL**Synonyms** VLP

Function May be involved in the digestion of phagocytosed particles in the lysosome, participation in an inflammatory protease cascade, and trimming of peptides for antigen presentation.

Tissue Location

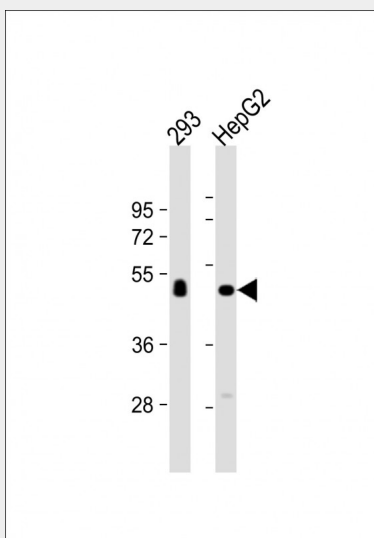
Expressed in macrophages but not in other leukocytes. Abundantly expressed in heart and kidney. Also expressed in spleen, leukocytes, and placenta

CPVL Antibody (C-term) - Protocols

Provided below are standard protocols that you may find useful for product applications.

- [Western Blot](#)
- [Blocking Peptides](#)
- [Dot Blot](#)
- [Immunohistochemistry](#)
- [Immunofluorescence](#)
- [Immunoprecipitation](#)
- [Flow Cytometry](#)
- [Cell Culture](#)

CPVL Antibody (C-term) - Images



All lanes : Anti-CPVL Antibody (C-term) at 1:1000 dilution Lane 1: 293 whole cell lysate Lane 2: HepG2 whole cell lysate Lysates/proteins at 20 µg per lane. Secondary Goat Anti-Rabbit IgG, (H+L), Peroxidase conjugated at 1/10000 dilution. Predicted band size : 54 kDa Blocking/Dilution buffer: 5% NFDM/TBST.

CPVL Antibody (C-term) - Background

May be involved in the digestion of phagocytosed particles in the lysosome, participation in an inflammatory protease cascade, and trimming of peptides for antigen presentation.