

TAF7L Antibody (N-term)
Affinity Purified Rabbit Polyclonal Antibody (Pab)
Catalog # AP20359a**Specification**

TAF7L Antibody (N-term) - Product Information

Application	WB,E
Primary Accession	Q5H9L4
Reactivity	Human
Host	Rabbit
Clonality	Polyclonal
Isotype	Rabbit IgG
Calculated MW	52588
Antigen Region	68-96

TAF7L Antibody (N-term) - Additional Information**Gene ID** 54457**Other Names**

Transcription initiation factor TFIID subunit 7-like, Cancer/testis antigen 40, CT40, RNA polymerase II TBP-associated factor subunit Q, TATA box-binding protein-associated factor 50 kDa, Transcription initiation factor TFIID 50 kDa subunit, TAF7L, TAF2Q

Target/Specificity

This TAF7L antibody is generated from rabbits immunized with a KLH conjugated synthetic peptide between 68-96 amino acids from the N-terminal region of human TAF7L.

Dilution

WB~~1:1000

Format

Purified polyclonal antibody supplied in PBS with 0.09% (W/V) sodium azide. This antibody is purified through a protein A column, followed by peptide affinity purification.

Storage

Maintain refrigerated at 2-8°C for up to 2 weeks. For long term storage store at -20°C in small aliquots to prevent freeze-thaw cycles.

Precautions

TAF7L Antibody (N-term) is for research use only and not for use in diagnostic or therapeutic procedures.

TAF7L Antibody (N-term) - Protein Information**Name** TAF7L**Synonyms** TAF2Q

Function Probably functions as a spermatogenesis-specific component of the DNA-binding general transcription factor complex TFIID, a multimeric protein complex that plays a central role in mediating promoter responses to various activators and repressors. May play a role in spermatogenesis (By similarity).

Cellular Location

Nucleus. Cytoplasm. Note=Cytoplasmic in spermatogonia and early spermatocytes (preleptotene, leptotene, and zygotene); translocates into the nuclei of pachytene spermatocytes and round spermatids.

Tissue Location

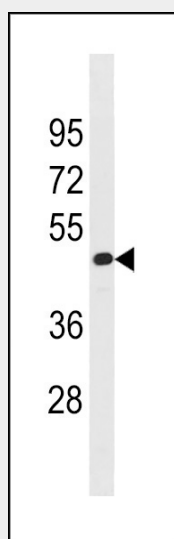
Testis-specific..

TAF7L Antibody (N-term) - Protocols

Provided below are standard protocols that you may find useful for product applications.

- [Western Blot](#)
- [Blocking Peptides](#)
- [Dot Blot](#)
- [Immunohistochemistry](#)
- [Immunofluorescence](#)
- [Immunoprecipitation](#)
- [Flow Cytometry](#)
- [Cell Culture](#)

TAF7L Antibody (N-term) - Images



TAF7L Antibody (N-term) (Cat. #AP20359a) western blot analysis in HepG2 cell line lysates (35ug/lane). This demonstrates the TAF7L antibody detected the TAF7L protein (arrow).

TAF7L Antibody (N-term) - Background

Probably functions as a spermatogenesis-specific component of the DNA-binding general transcription factor complex TFIID, a multimeric protein complex that plays a central role in mediating promoter responses to various activators and repressors. May play a role in spermatogenesis (By similarity).