

**BCL6B Antibody (Center)**  
**Affinity Purified Rabbit Polyclonal Antibody (Pab)**  
**Catalog # AP20369c****Specification**

---

**BCL6B Antibody (Center) - Product Information**

Application	WB,E
Primary Accession	<a href="#">Q8N143</a>
Reactivity	Human
Host	Rabbit
Clonality	Polyclonal
Isotype	Rabbit IgG
Calculated MW	51531
Antigen Region	276-302

**BCL6B Antibody (Center) - Additional Information****Gene ID** 255877**Other Names**

B-cell CLL/lymphoma 6 member B protein, Bcl6-associated zinc finger protein, Zinc finger protein 62, BCL6B, BAZF, ZNF62

**Target/Specificity**

This BCL6B antibody is generated from rabbits immunized with a KLH conjugated synthetic peptide between 276-302 amino acids from the Central region of human BCL6B.

**Dilution**

WB~~1:2000

E~~Use at an assay dependent concentration.

**Format**

Purified polyclonal antibody supplied in PBS with 0.09% (W/V) sodium azide. This antibody is purified through a protein A column, followed by peptide affinity purification.

**Storage**

Maintain refrigerated at 2-8°C for up to 2 weeks. For long term storage store at -20°C in small aliquots to prevent freeze-thaw cycles.

**Precautions**

BCL6B Antibody (Center) is for research use only and not for use in diagnostic or therapeutic procedures.

**BCL6B Antibody (Center) - Protein Information****Name** BCL6B**Synonyms** BAZF, ZNF62

**Function** Acts as a sequence-specific transcriptional repressor in association with BCL6. May function in a narrow stage or be related to some events in the early B-cell development.

**Cellular Location**

Nucleus.

**Tissue Location**

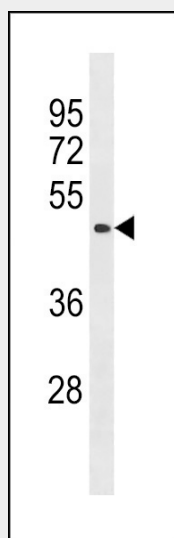
Ubiquitously expressed with higher expression found in heart and placenta.

**BCL6B Antibody (Center) - Protocols**

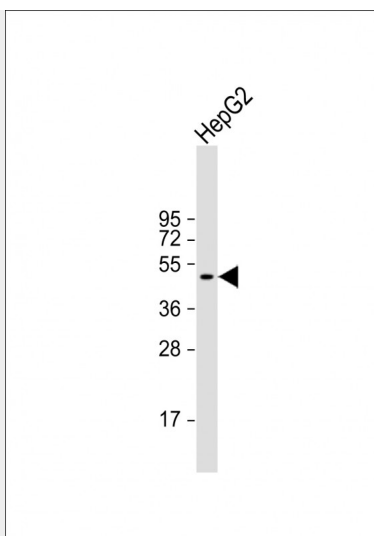
Provided below are standard protocols that you may find useful for product applications.

- [Western Blot](#)
- [Blocking Peptides](#)
- [Dot Blot](#)
- [Immunohistochemistry](#)
- [Immunofluorescence](#)
- [Immunoprecipitation](#)
- [Flow Cytometry](#)
- [Cell Culture](#)

**BCL6B Antibody (Center) - Images**



BCL6B Antibody (Center) (Cat. #AP20369c) western blot analysis in A549 cell line lysates (35ug/lane). This demonstrates the BCL6B antibody detected the BCL6B protein (arrow).



Anti-BCL6B Antibody (Center) at 1:2000 dilution + HepG2 whole cell lysate Lysates/proteins at 20 µg per lane. Secondary Goat Anti-Rabbit IgG, (H+L), Peroxidase conjugated at 1/10000 dilution. Predicted band size : 52 kDa Blocking/Dilution buffer: 5% NFDM/TBST.

#### **BCL6B Antibody (Center) - Background**

Acts as a sequence-specific transcriptional repressor in association with BCL6. May function in a narrow stage or be related to some events in the early B-cell development.

#### **BCL6B Antibody (Center) - Citations**

- [Global analysis of histone modifications and long-range chromatin interactions revealed the differential cistrome changes and novel transcriptional players in human dilated cardiomyopathy](#)
- [BCL6B suppresses proliferation and migration of colorectal carcinoma cells through inhibition of the PI3K/AKT signaling pathway.](#)