

ESCO1 Antibody (C-term)
Affinity Purified Rabbit Polyclonal Antibody (Pab)
Catalog # AP20370b**Specification**

ESCO1 Antibody (C-term) - Product Information

Application	WB,E
Primary Accession	Q5FWF5
Other Accession	Q69Z69
Reactivity	Human, Mouse
Host	Rabbit
Clonality	Polyclonal
Isotype	Rabbit IgG
Calculated MW	94983
Antigen Region	661-687

ESCO1 Antibody (C-term) - Additional Information**Gene ID** 114799**Other Names**

N-acetyltransferase ESCO1, 231-, CTF7 homolog 1, Establishment factor-like protein 1, EFO1p, hEFO1, Establishment of cohesion 1 homolog 1, ECO1 homolog 1, ESO1 homolog 1, ESCO1, EFO1, KIAA1911

Target/Specificity

This ESCO1 antibody is generated from rabbits immunized with a KLH conjugated synthetic peptide between 661-687 amino acids from the C-terminal region of human ESCO1.

Dilution

WB~~1:1000

E~~Use at an assay dependent concentration.

Format

Purified polyclonal antibody supplied in PBS with 0.09% (W/V) sodium azide. This antibody is purified through a protein A column, followed by peptide affinity purification.

Storage

Maintain refrigerated at 2-8°C for up to 2 weeks. For long term storage store at -20°C in small aliquots to prevent freeze-thaw cycles.

Precautions

ESCO1 Antibody (C-term) is for research use only and not for use in diagnostic or therapeutic procedures.

ESCO1 Antibody (C-term) - Protein Information**Name** ESCO1

Synonyms EFO1, KIAA1911

Function Acetyltransferase required for the establishment of sister chromatid cohesion (PubMed:[15958495](#), PubMed:[18614053](#)). Couples the processes of cohesion and DNA replication to ensure that only sister chromatids become paired together. In contrast to the structural cohesins, the deposition and establishment factors are required only during S phase. Acts by mediating the acetylation of cohesin component SMC3 (PubMed:[18614053](#)).

Cellular Location

Nucleus. Chromosome Note=Nuclear at interphase, associated with chromosomes during mitosis

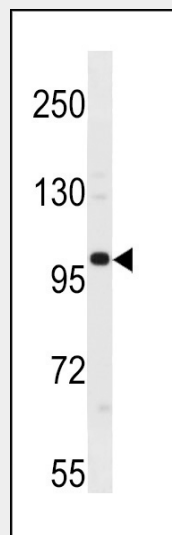
Tissue Location

Widely expressed. Expressed in heart, brain, liver, placenta, lung, kidney and pancreas. Highly expressed in muscle

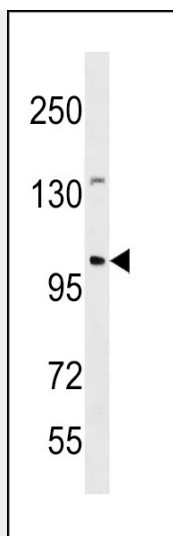
ESCO1 Antibody (C-term) - Protocols

Provided below are standard protocols that you may find useful for product applications.

- [Western Blot](#)
- [Blocking Peptides](#)
- [Dot Blot](#)
- [Immunohistochemistry](#)
- [Immunofluorescence](#)
- [Immunoprecipitation](#)
- [Flow Cytometry](#)
- [Cell Culture](#)

ESCO1 Antibody (C-term) - Images

ESCO1 Antibody (C-term) (Cat. #AP20370b) western blot analysis in 293 cell line lysates (35ug/lane). This demonstrates the ESCO1 antibody detected the ESCO1 protein (arrow).



ESCO1 Antibody (C-term) (Cat. #AP20370b) western blot analysis in mouse spleen tissue lysates (35ug/lane). This demonstrates the ESCO1 antibody detected the ESCO1 protein (arrow).

ESCO1 Antibody (C-term) - Background

Acetyltransferase required for the establishment of sister chromatid cohesion and couple the processes of cohesion and DNA replication to ensure that only sister chromatids become paired together. In contrast to the structural cohesins, the deposition and establishment factors are required only during S phase. Acts by mediating the acetylation of cohesin component SMC3.